

PRELIMINARY DRAFT MAP OF POTENTIAL ENERGY CORRIDORS ON FEDERAL LANDS

The U.S. Departments of Energy, Interior, Agriculture, and Defense (the Agencies) are preparing a draft Programmatic Environmental Impact Statement (PEIS) pursuant to the National Environmental Policy Act to identify the impacts associated with designating energy corridors on federal lands in 11 Western States. Energy corridors may contain oil, gas, and hydrogen pipelines and electricity transmission facilities. The Agencies are preparing the PEIS at the direction of Congress, as set forth in Section 368 of the Energy Policy Act of 2005. On the basis of the information and analyses developed in the PEIS, the Agencies will designate energy corridors by amending their respective land use plans.

Public scoping meetings were held in October and November 2005, and the comments received during scoping have helped the Agencies to identify preliminary energy corridors on federal lands that the Agencies propose to analyze in the draft PEIS. The Agencies are presenting this preliminary energy corridor map to inform the public of their progress and to obtain public comment on the proposed corridor locations. The Agencies encourage your views, criticism, and suggestions about these preliminary energy corridor locations.

The potential energy corridor locations depicted on this map represent ongoing work by the Agencies. **Therefore, the corridor locations shown in this map are subject to change until they are officially established in August 2007.** All officially designated corridors will be in compliance with applicable laws and regulations. The majority of the preliminary energy corridors utilize existing corridors and/or rights-of-way, however, there are a small number of potential new corridor locations.

Comments on the preliminary energy corridor map may be submitted electronically through the public comment form on the West-wide Energy Corridor Programmatic EIS Information Center Web Site at <http://corridoreis.anl.gov>. Written comments can also be mailed or faxed and should be addressed to:

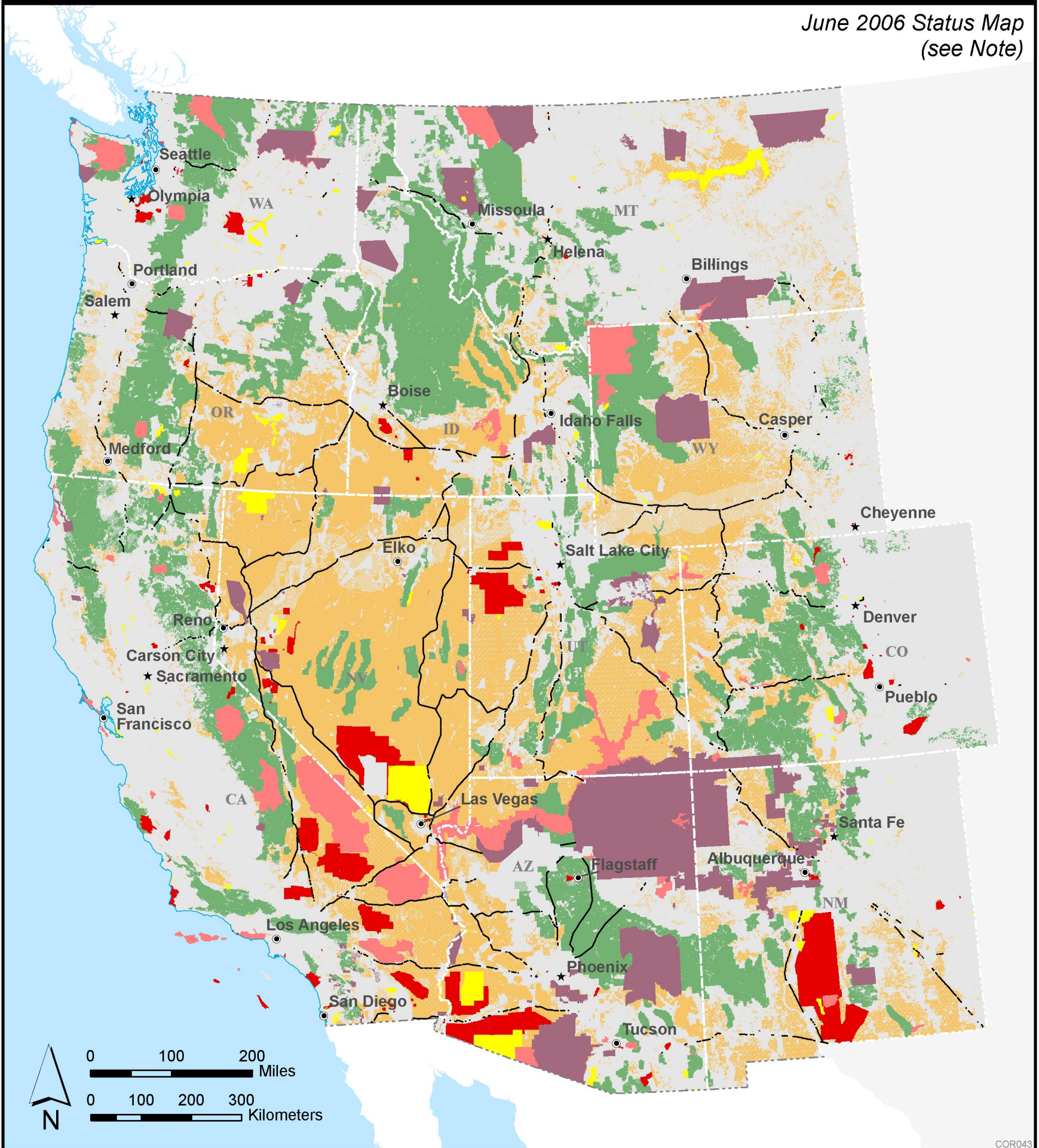
Office of Electricity Delivery and Energy Reliability
Room 8H-033
U.S. Department of Energy
1000 Independence Avenue, S.W.
Washington, DC 20585
Fax: (202) 586-1472

The Agencies request that all comments on the preliminary energy corridor map be provided no later than July 10, 2006. The Agencies will review and consider all comments that are received by the deadline in preparation of the draft PEIS. The opportunity for comment provided here is in addition to the opportunity the public will have to comment on the draft PEIS.

More information about the preliminary draft energy corridor map and the West-wide Energy Corridor PEIS is available on the West-wide Energy Corridor Programmatic EIS Information Center Web site at <http://corridoreis.anl.gov>.

Ongoing Work by Federal Agencies on Potential Energy Corridors in the Western States (Preliminary Draft - Subject to Change)

June 2006 Status Map
(see Note)



Note:

The potential energy corridors depicted on this map represent ongoing work by the Agencies to establish energy corridors in 11 Western states as required by the Energy Policy Act of 2005. The corridors are subject to change until they are officially established in August 2007. All officially designated corridors will be in compliance with applicable laws and regulations. The majority of the preliminary energy corridors utilize existing corridors and/or rights-of-way, but there are a small number of potential new corridor locations. Based upon the information and analyses developed in the West-wide Energy Corridor Programmatic EIS, the Agencies will designate energy corridors by amending their respective land use plans. Corridors shown on this map are not to scale. Widths of 3,500 feet are currently under consideration, but are too small to be clearly depicted on this map.

- Potential Energy Corridor (see Note)
- Bureau of Land Management
- U.S. Forest Service
- U.S. Department of Defense
- National Park Service
- U.S. Fish and Wildlife Service
- Tribal Land