

Corridor 87-277

Monarch Pass Corridor

Corridor Rationale

Input regarding alignment from the Western Utility Group during the WVEC PEIS suggested following this route. There is a 345-kV planned electric transmission line within the entire corridor and a 115-kV planned electric transmission line that generally parallels the corridor from MP 53 to MP 130. Currently, there are no pending or recently authorized major ROWs within the corridor at this time; an authorized transmission line ROW intersects the corridor near MP 93. Concerns identified after the 2009 corridor designation were perceived that the corridor was more aligned to serve non-renewable energy development; however, there is renewable energy potential in the San Luis Valley, with transmission coming north over Poncha Pass to MP 58 would be a possibility. In addition, Gunnison County has had interest in geothermal development on private lands in the Waunita vicinity, but has no active applications at this time. These examples of renewable energy potential may alleviate the previous concern.

Corridor location:

Colorado (Chaffee, Fremont, Gunnison, and Montrose Co.)

BLM: Gunnison and Royal Gorge Field Offices

USFS: Grand Mesa, Uncompahgre, and Gunnison and Pike-San Isabel National Forests

Regional Review Region(s): Region 2

Corridor width, length:

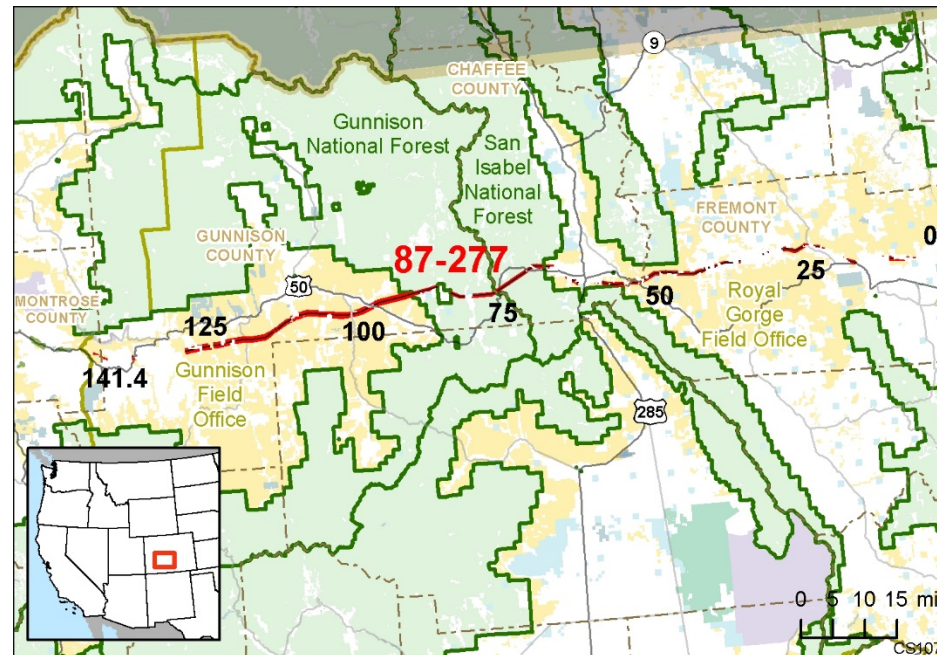
Width variable from 1,000 – 5,280 ft
76.6 miles of designated corridor
141.3 mile-posted route, including gaps

Sec 368 energy corridor restrictions: (N)

- corridor is multi-modal

Corridor of concern (Y)

- coal, WSAs, Gunnison Sage-grouse habitat, and National Historic Places.



Corridor history:

- Locally designated corridor prior to 2009 (Y)
 - Locally designated in Gunnison FO
- Existing infrastructure (Y)
 - Electric transmission:
 - 230 kV, 345 kV (MP 3 to MP 141)
- Energy potential near the corridor (Y)
 - Hydroelectric power plants within 4 mi (MP 64, MP 129, and MP 141)
 - Active geothermal lease near MP 85 to MP 88 partly intersects corridor.
- Corridor changes since 2009 (N)

Figure 1. Corridor 87-277

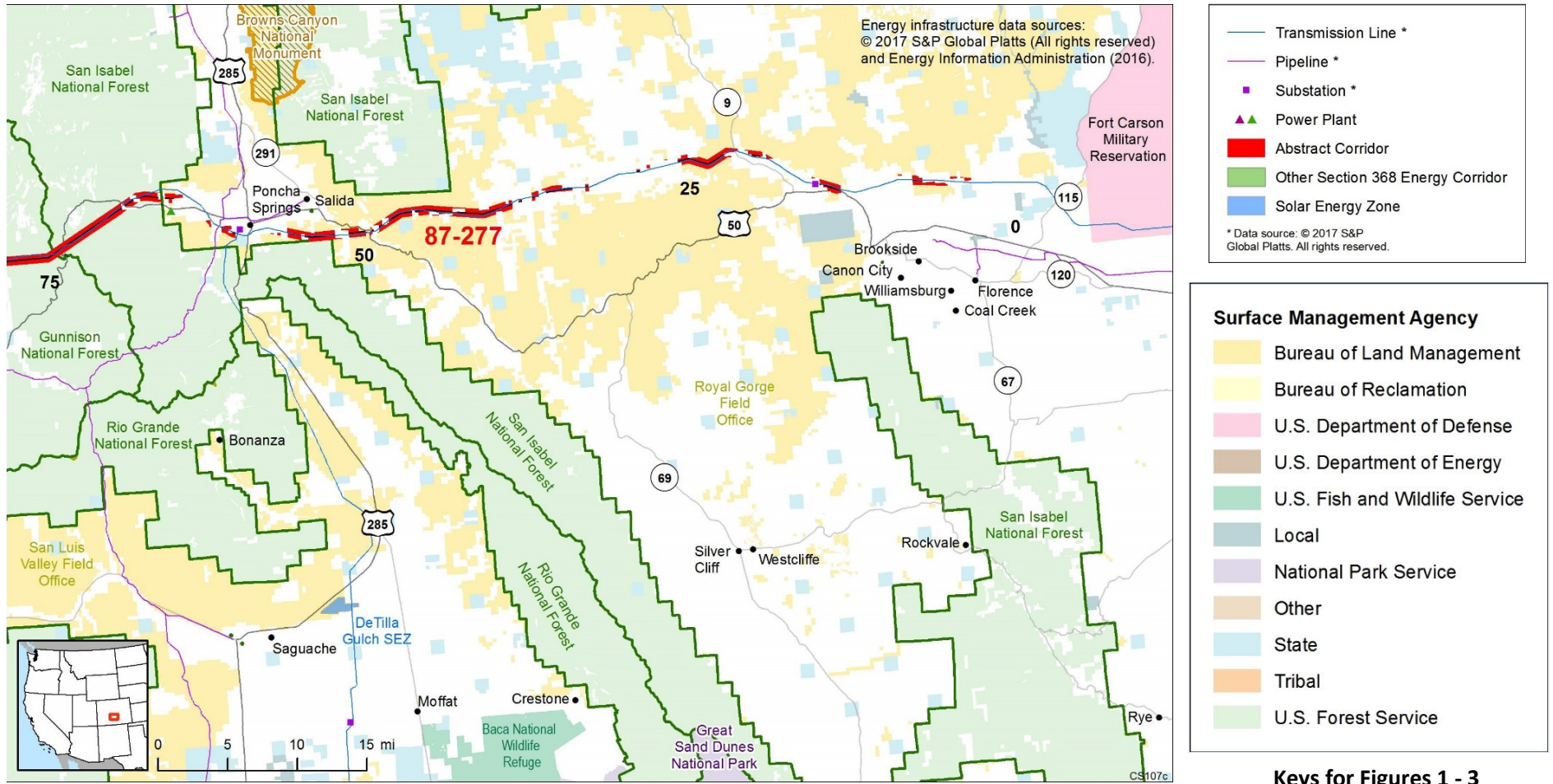


Figure 2. Corridor 87-277 (MP 0 to MP 100) and nearby electric transmission lines and pipelines

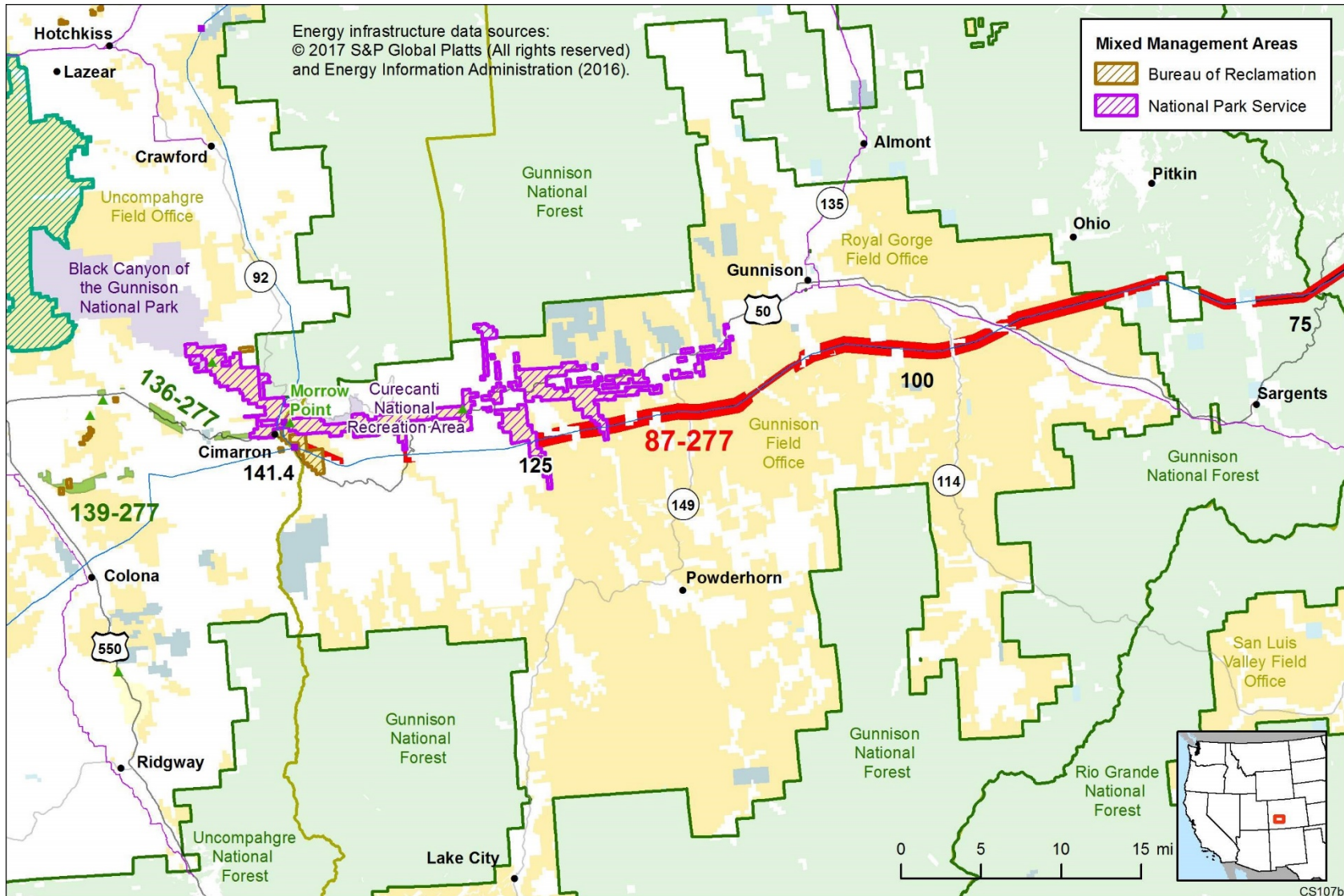


Figure 3. Corridor 87-277 (MP 75 to MP 141) and nearby electric transmission lines and pipelines

Conflict Map Analysis

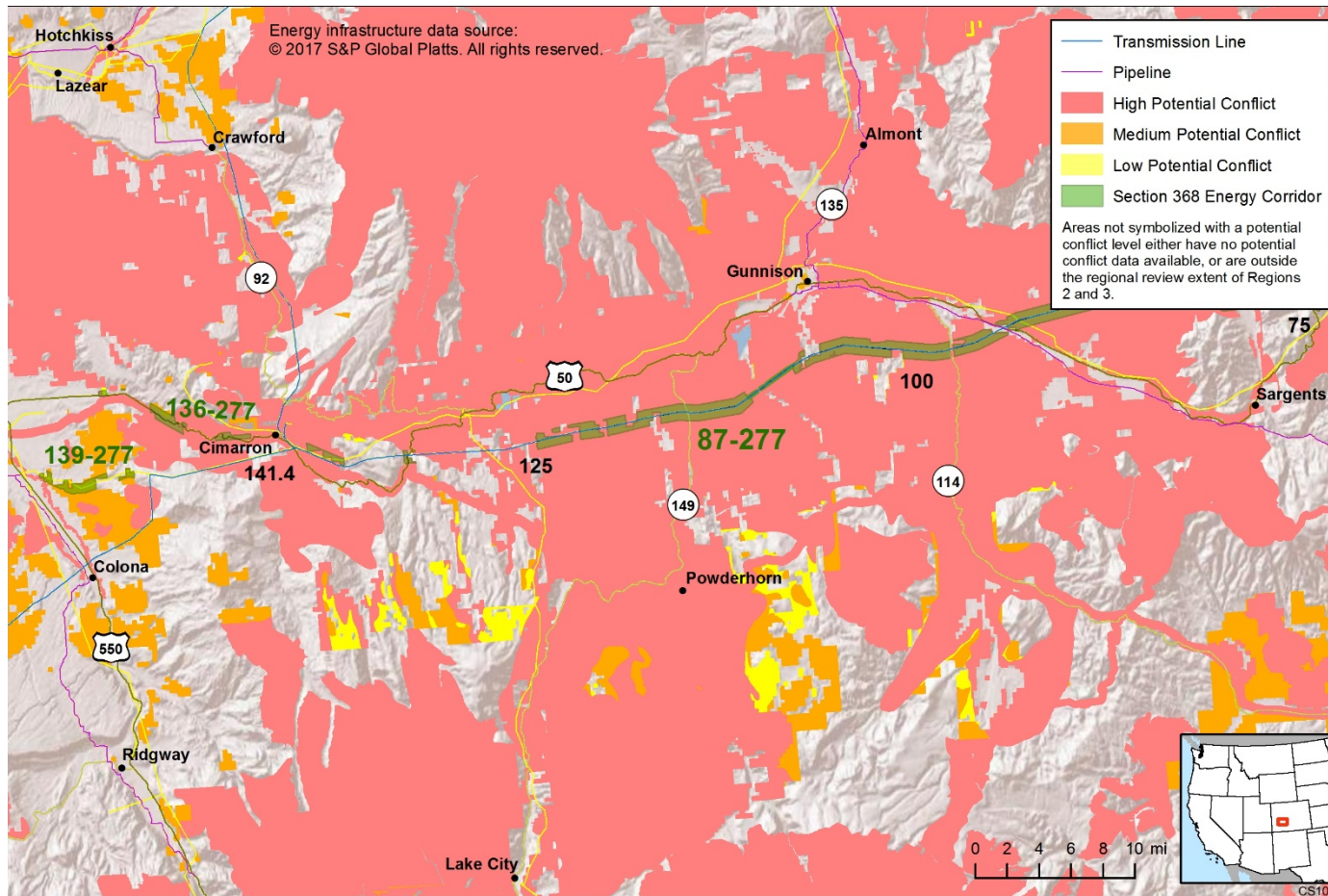


Figure 4. Map of Conflict Areas in Vicinity of Corridor 87-277 (MP 0 to MP 100)

Figures 4 and 5 reflect a comprehensive resource conflict assessment developed to enable the Agencies and stakeholders to visualize a corridor’s proximity to environmentally sensitive areas and to evaluate options for routes with lower potential conflict. The potential conflict assessment (low, medium, high) shown in the figure is based on [criteria](#) found on the WWEC Information Center at www.corridoreis.anl.gov. To meet the intent of the Energy Policy Act and the Settlement Agreement siting principles, corridors may be located in areas where there is potentially high resource conflict; however, where feasible, opportunity for corridor revisions should be identified in areas with potentially lower conflict.

Visit the 368 Mapper for a full view of the Potential conflict map
(<https://bogi.evs.anl.gov/section368/portal/>)

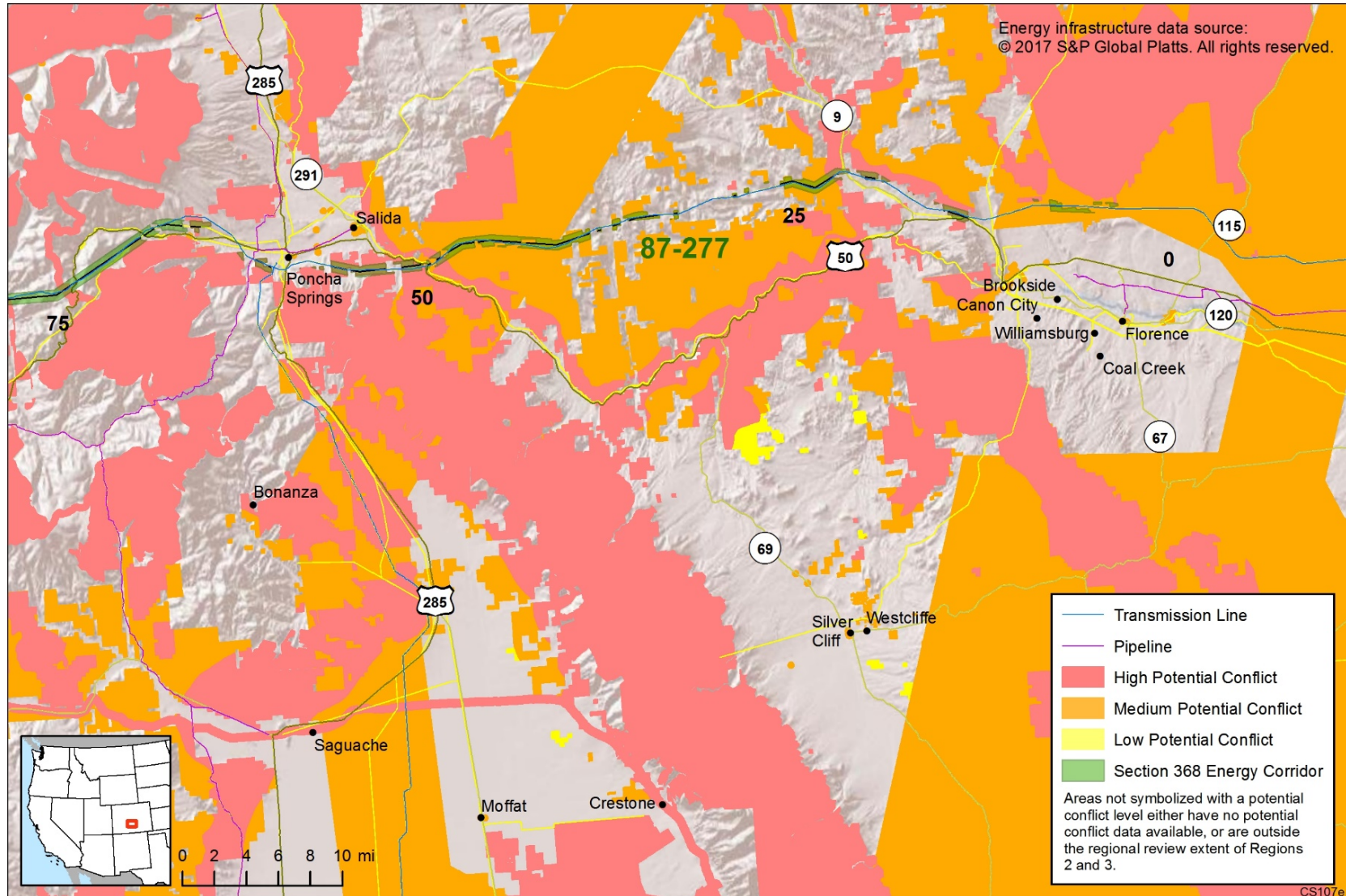


Figure 5. Map of Conflict Areas in Vicinity of Corridor 87-277 (MP 75 to MP 141)

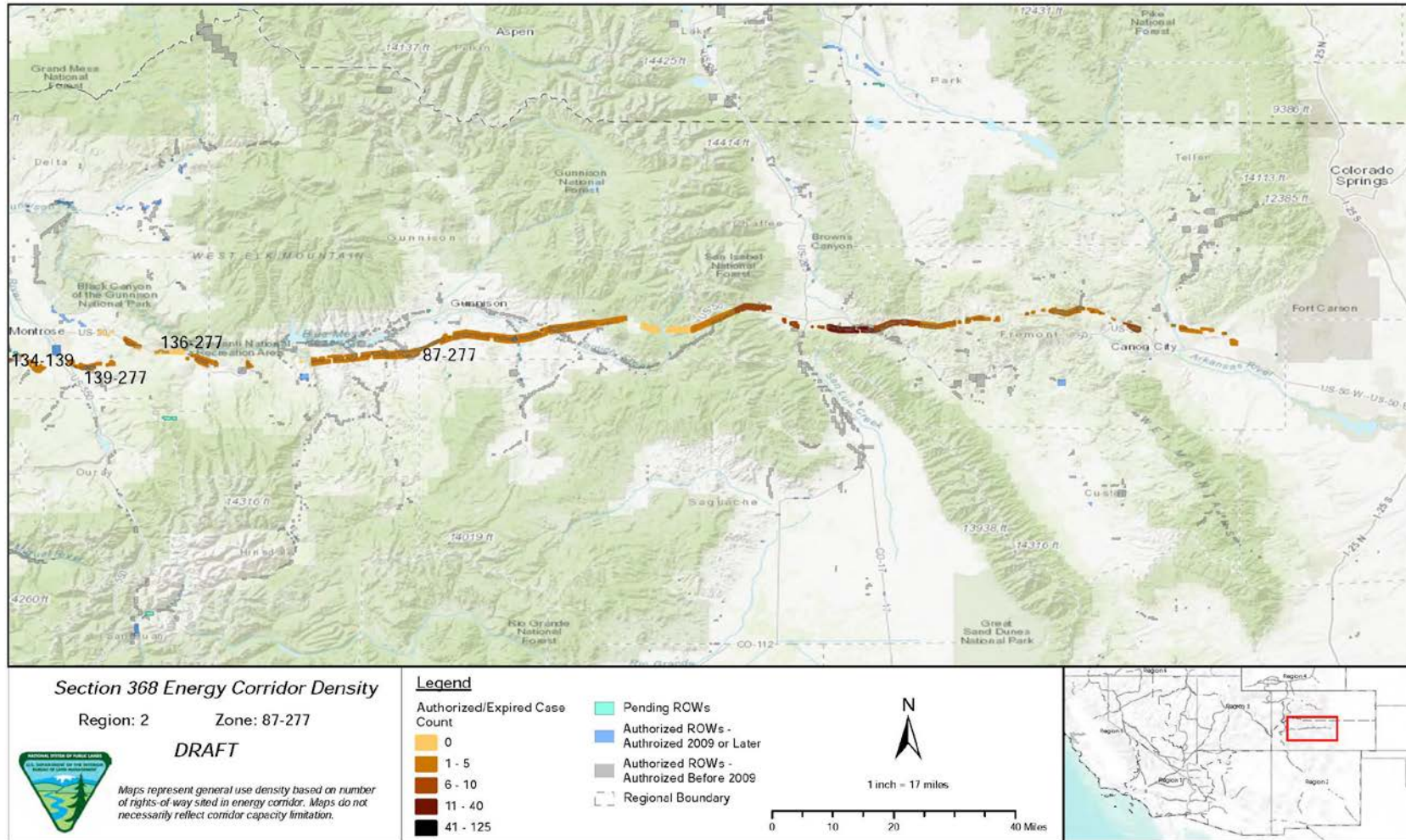


Figure 6. Corridor 87-277, Corridor Density Map.

Figure 6 shows the density of energy use to assist in evaluating corridor utility. ROWs granted prior to the corridor designation (2009) are shown in grey; ROWs granted after corridor designation are shown in blue; and pending ROWs under current review for approval are shown in turquoise. Note the ROW density shown for the corridor is only a snapshot that does not fully illustrate remaining corridor capacity. Not all ROWs have GIS data at the time this abstract was developed. BLM and USFS are currently improving their ROW GIS databases and anticipate more complete data in the near future.

General Stakeholder Feedback on Corridor Utility

Stakeholders did not provide specific input on corridor utility.

Corridor Review Table

The table below captures details of the Agencies' review of the energy corridor. Consideration of the general corridor siting principles of the 2012 Settlement Agreement framed each corridor review, to identify potential improvements to maximize corridor utility and minimize impacts on the environment. Initial Agency analysis is provided to facilitate further discussion during stakeholder workshops.

CORRIDOR 87-277 REVIEW TABLE							
ID	Agency	Agency Jurisdiction	County	Primary Issue	Corridor Location (by Milepost [MP])	Source	Agency Review and Analysis ^{1, 2}
ENVIRONMENTAL RESOURCE ISSUES							
<i>Specially Designated Areas</i>							
87-277 .001	USFS	GMUG National Forests	On the border of Gunnison CO and Chaffee, CO	CDNST	MP 74	GIS Analysis: CDNST intersects corridor	<p>There are no practical opportunities for the corridor to avoid crossing the CDNST. The current corridor path is well suited because it is centered on an existing 230-kV transmission line in an area that already has power lines and is heavily developed (Monarch Ski Area) keeping all impacts to this location. (1)</p> <p>There is an opportunity for the Agencies to consider adding an IOP for NSTs and NHTs as well as adding an IOP related to Visual Resources to ensure appropriate consideration occurs with proposed development within the energy corridor. (2)</p>
87-277 .002	BLM	Royal Gorge FO	Fremont, CO	Wild and scenic rivers (suitable segment)	MP 49	Agency Input: corridor crosses BLM lands that have been determined to be suitable for designation into the National Wild and Scenic Rivers System. The outstandingly remarkable values identified for this segment	BLM's interim management policy for suitable river segments, found in BLM Manual 6400, specifies that BLM cannot take any actions that will degrade ORVs. Any proposed upgrades to existing powerlines or construction of new powerlines would have to be sited and designed in a

CORRIDOR 87-277 REVIEW TABLE							
ID	Agency	Agency Jurisdiction	County	Primary Issue	Corridor Location (by Milepost [MP])	Source	Agency Review and Analysis ^{1, 2}
						include recreation and scenery values.	manner so that BLM could conclude there is no degradation to recreation or scenery values. (3)
87-277 .003	BLM	Royal Gorge FO	Fremont, Chafee, CO	Gold Belt Tour National Scenic and Historic Byway	Intersections: MP 9, MP 13 to MP 14, and MP 22	GIS Analysis: Gold Belt Tour Scenic and Historic Byway intersects corridor.	The Royal Gorge FO is one of 10 Agencies that manage the Gold Belt Byway. Future development that may affect the Byway would require coordination among the Agencies. (3)
87-277 .004	USFS	San Isabel National Forest	Fremont and Chaffee, CO	Colorado Roadless Areas: Badger Creek, Sangre de Cristo: Silverheels Gulch to Hunts Creek, Methodist Mountain, Chipeta, Mount Antero	MP 52 to MP 53 and MP 68 to MP 70	<p>GIS Analysis: Sangre de Cristo: Silverheels Gulch to Hunts Creek intersects corridor. Chipeta intersects and is adjacent to corridor.</p> <p>Comment on abstract: 144 acres of the Chipeta Colorado Roadless Area and 37 acres of the Sangre de Cristo: Silverheels Gulch to Hunts Creek Colorado Roadless Area intersect with corridor. The Colorado Roadless Areas have remarkable habitat for many species.</p> <p>Agencies should realign the corridor or reduce the width of the corridor to avoid these Colorado Roadless Areas and include recommendations to eliminate the intersection.</p>	<p>There is an opportunity for the Agencies to consider shifting the corridor to the north or reducing the width of the corridor to avoid the Colorado Roadless Areas while still collocating with the existing transmission line. There is also an opportunity to consider the addition of an Agency Coordination IOP related to Roadless Areas.</p> <p>The San Isabel National Forest completed a GIS review of the corridor from MP 65 to MP 68 and MP 69.5 to MP 71.9 and found the corridor to be outside of the roadless areas. (2)</p>
87-277 .005	BLM	Gunnison FO	Gunnison and Montrose, CO	OSNHT	MP 141	GIS Analysis: OSNHT is located near the corridor and intersects private land that is in alignment with the corridor.	There are no practical opportunities for the corridor to avoid crossing the OSNHT. However, there is an opportunity for the Agencies to consider adding an IOP for NSTs and NHTs as well as adding an IOP related to Visual Resources to ensure appropriate consideration occurs with

CORRIDOR 87-277 REVIEW TABLE

ID	Agency	Agency Jurisdiction	County	Primary Issue	Corridor Location (by Milepost [MP])	Source	Agency Review and Analysis ^{1, 2}
							proposed development within the energy corridor. (2)
87-277 .006	BLM	Royal Gorge FO	Fremont, CO	High Mesa Grassland WSA	MP 24	GIS Analysis: WSA over 1 mi south of corridor.	WSAs are an important resource that are considered carefully during corridor planning. The corridor's current location does not intersect the WSA and best meets the siting principles (1).
87-277 .007	BLM	Royal Gorge FO and Gunnison FO	Fremont and Gunnison, CO	Phantom Canyon ACEC, Garden Park ACEC, Arkansas Canyonlands ACEC, and South Beaver Creek ACEC	Intersections: MP 4, MP 109 to MP 110 Near: MP 8 to MP 9, MP 23 to MP 29	GIS Analysis: Phantom Canyon ACEC and South Beaver Creek ACEC intersect corridor. Garden Park ACEC less than 1 mi north of corridor, Arkansas Canyonlands ACEC over 1 mi south of corridor. Comment on abstract: the Agencies must use a consistent approach that makes clear commitments to addressing intersections with ACECs and other special designations and provides details on opportunities to do so through corridor revisions.	There are no practical opportunities for the corridor to avoid the Phantom Canyon and South Beaver Creek ACECs while still being located on BLM-administered lands. The Royal Gorge RMP has exclusion and avoidance prescriptions related to utility corridors and intersection with ACECs. The Gunnison RMP specifically allows ROWs through the South Beaver Creek ACEC "provided surface disturbance does not impair or degrade colonies of Skiff Milkvetch" and that on-the-ground inventories are done and appropriate mitigations are applied. ROWs will be authorized on a case-by-case basis when exclusion and avoidance criteria are satisfied and protective stipulations are in place. Further analysis is not a consideration for corridor-level planning. (3)
87-277 .008	BLM	Royal Gorge FO	Fremont, CO	Indian Springs Trace Fossil Area	MP 4	GIS Analysis: Natural National Landmark less than 1 mi northeast of corridor.	The Indian Springs Trace Fossil Area should not be an issue at this distance; however, coordination and mitigation, as needed, would occur during ROW application process. (1)
87-277 .009	BLM	Royal Gorge FO	Fremont and Chaffee, CO	Gold Belt SRMA	MP 0 to MP 23, MP 47 to MP 52	GIS Analysis: SRMA intersects corridor.	There are no opportunities for the corridor to avoid the SRMA on BLM-administered lands. The Royal Gorge RMP does not have exclusion or

CORRIDOR 87-277 REVIEW TABLE							
ID	Agency	Agency Jurisdiction	County	Primary Issue	Corridor Location (by Milepost [MP])	Source	Agency Review and Analysis ^{1, 2}
							avoidance prescriptions for utility corridors that intersect SRMAs. The existing corridor best meets siting principles. (1)
Ecology							
87-277 .010	BLM and USFS	Gunnison FO, GMUG National Forest	Montrose and Gunnison, CO	GUSG critical habitat (ESA-listed: threatened)	MP 77 to MP 78, MP 78 to MP 79, MP 79 to MP 83, MP 84 to MP 127, MP 129 to MP 133, MP 137 to MP 141, and MP 141	<p>Settlement Agreement</p> <p>RFI: re-route to avoid GUSG habitat.</p> <p>GIS Analysis: critical habitat located within the corridor.</p> <p>Comment on abstract: between MP 77 to MP 86 the only way to avoid GUSG critical habitat would be to shift the corridor north.</p> <p>Corridor maintenance practices/results can fragment GUSG habitat. Recommend a review of all maintenance and repair practices to reduce impacts; conformance with the Gunnison Basin GUSG Conservation Agreement on Federal Lands is a mandatory part of all corridor practices in the Gunnison Basin.</p> <p>There is already existing energy infrastructure that has been identified as having an adverse impact on GUSG; development of the corridor would further jeopardize the vitality the species.</p>	<p>There is an opportunity to consider revising the corridor in the GMUG National Forest, including shifting the corridor between MP 77 to MP 86 to avoid GUSG critical habitat while still encompassing the existing transmission line. (2)</p> <p>Given the wide expanse of the critical habitat along the other areas where the corridor intersects GUSG critical habitat, alternate routes would still require siting through GUSG critical habitat. Further analysis and consultation with the USFWS to determine the presence of the GUSG and its proposed critical habitat within the area would be required prior to authorizing development in the corridor, but further analysis is not a consideration for corridor-level planning. (3)</p>

CORRIDOR 87-277 REVIEW TABLE							
ID	Agency	Agency Jurisdiction	County	Primary Issue	Corridor Location (by Milepost [MP])	Source	Agency Review and Analysis ^{1, 2}
						Drop this corridor or reroute to avoid GUSG critical habitat to avoid disturbing breeding and nesting activity in the area. 64 mi of corridor goes through GUSG critical habitat and 42 mi through Gunnison Basin IBA intermittently.	
87-277 .011	BLM and USFS	Gunnison FO and GMUG National Forests	Montrose and Gunnison, CO	GUSG production areas (ESA-listed: threatened)	Approx. MP 77 to MP 141 (end)	RFI: re-route or exclude new infrastructure ROWs and avoid all new energy infrastructure development within GUSG production areas. Use full mitigation hierarchy to avoid, minimize, and compensate for impacts within 4 mi of important GUSG breeding areas.	
87-277 .012	BLM	Royal Gorge FO	Fremont, CO	Mexican Spotted Owl critical habitat (ESA-listed: threatened)	MP 4 to MP 6	GIS Analysis: critical habitat as close as 530 ft north of corridor but does not overlap the corridor. Comment on abstract: 2 mi through Mexican Spotted Owl critical habitat.	The corridor does not overlap critical habitat for the Mexican Spotted Owl. Further analysis to determine the presence of the owl and its critical habitat within the area would be required prior to authorizing development in the corridor, but further analysis is not a consideration for corridor-level planning. (3)
87-277 .013	BLM	Gunnison FO	Gunnison, CO	Western Yellow-billed Cuckoo (ESA-listed: threatened)	Not specified.	Agency Input: Western Yellow-billed cuckoo identified by BLM CO as an issue for this corridor. Comment on abstract: unspecified number of miles through Western Yellow-billed Cuckoo proposed critical habitat.	The corridor location within Western Yellow-billed Cuckoo proposed critical habitat is not easily resolved or avoided by corridor-level planning because alternate routes may still require siting through the proposed critical habitat. Further analysis to determine the presence of the Western Yellow-billed Cuckoo and its proposed critical habitat within the area would be required prior to authorizing development in the corridor, but further analysis is not a

CORRIDOR 87-277 REVIEW TABLE							
ID	Agency	Agency Jurisdiction	County	Primary Issue	Corridor Location (by Milepost [MP])	Source	Agency Review and Analysis ^{1, 2}
							consideration for corridor-level planning. The proposed critical habitat in the Gunnison FO does not intersect the corridor. However, the range map from USFWS shows that the corridor crosses segments of mapped species range (a buffer along the major drainages). (3)
87-277 .014	USFS	San Isabel National Forest	Chaffee, CO	Canada Lynx (ESA-listed: threatened)	MP 64 to MP 74	Agency Input: portions of the corridor across the San Isabel National Forest is located within a Canada Lynx Analysis Unit. Comment on abstract: 10 mi through Canada Lynx habitat.	The corridor location within the current range where the Canada Lynx may occur is not easily resolved or avoided by corridor-level planning because alternate routes would still require siting through the current range of the species. Further analysis to determine the presence of the species occurring within the area will be considered outside of corridor-level planning. (3)
87-277 .015	Private		Fremont, CO	Black-footed Ferret (ESA-listed: endangered)	MP 0	Comment on abstract: Re-introduction sites are located in Black-tailed Prairie Dog colonies just east of the start of corridor. CPW recommends consultation with USFWS for any work that might impact Black-tailed Prairie Dog colonies in this area and potentially Black-footed Ferrets.	Consultation with the USFWS would be required prior to authorizing development in the corridor but further analysis of these species is not a consideration for corridor-level planning. (3)
87-277 .016				Special Status Species	Not specified.	Corridor intersection with possible habitat for ESA-listed species using USFWS's IPaC tool indicates that the following additional species not identified in the corridor abstract may be present: Canada Lynx, North American Wolverine, Southwestern Willow, Flycatcher,	The corridor location within the current range where these species may occur is not easily resolved or avoided by corridor-level planning because alternate routes could still require siting through the current range of these species. Further analysis to determine the presence of all species occurring within the area

CORRIDOR 87-277 REVIEW TABLE							
ID	Agency	Agency Jurisdiction	County	Primary Issue	Corridor Location (by Milepost [MP])	Source	Agency Review and Analysis ^{1, 2}
						<p>Bonytail Chub, Colorado Pikeminnow, Greenback Cutthroat Trout, Humpback Chub, Razorback Sucker, Clay-loving Wild Buckwheat, and Skiff Milkvetch.</p> <p>Conduct further analysis to determine the presence of abovementioned species.</p>	will be considered outside of corridor-level planning. (3)
87-277 .017	BLM	Gunnison FO	Gunnison, CO	Skiff Milkvetch (ESA-candidate species)	<p>Not specified.</p> <p>Comment on abstract: has the requirement for mitigation been firmly established, in case listing of Skiff Milkvetch is finalized? When evaluating soil conditions for relocation of plants, consider an area where a few Skiff Milkvetch exist but could maybe thrive with more.</p>	<p>Agency Input: in the Gunnison FO RMP, the South Beaver Creek ACEC was designated to protect the Skiff Milkvetch. The species occurs as small, scattered colonies throughout the ACEC and surrounding areas, which is the only place in the world this plant is known to occur. Colonies are typically on southeast to southwest exposures, although surveys from the past several years have found them on flats near existing colonies.</p>	<p>The corridor width is 1,000 ft in Gunnison FO because of the presence of Skiff Milkvetch. The RMP states that ROW development is allowed throughout the ACEC provided surface disturbance does not impair or degrade colonies of the Skiff Milkvetch. Appropriate mitigation would be required on all ROWs involving surface disturbing activities. The Gunnison FO typically conducts inventories for this plant in proposed project areas and relocates new disturbances to areas where there is no Skiff Milkvetch. Inventory would be done as part of the ROW application process. (1)</p>
87-277 .018	BLM	Royal Gorge FO	Chaffee and Fremont, CO	Brandegee Wild-buckwheat, Royal Gorge Stickleaf (BLM and Regional Forester's Sensitive species)	MP 49 to MP 55	<p>Agency Input: known populations of sensitive plant species within the corridor.</p>	<p>The corridor location within the current range where these species may occur is not easily resolved or avoided by corridor-level planning because alternate routes could still require siting through the current range of these species. Further analysis to determine the presence of these species occurring within the area will be considered outside of corridor-level planning. (3)</p>

CORRIDOR 87-277 REVIEW TABLE							
ID	Agency	Agency Jurisdiction	County	Primary Issue	Corridor Location (by Milepost [MP])	Source	Agency Review and Analysis ^{1, 2}
Lands with Wilderness Characteristics							
87-277 .019	BLM	Royal Gorge FO and Gunnison FO	Fremont and Gunnison, CO	Lands with wilderness characteristics	Cooper Mountain: MP 4 to MP 5 Eightmile Mountain: MP 13 to MP 21 Crampton Mountain: MP 22 to MP 26 Echo Canyon: MP 33 North Badger Creek: MP 39 to MP 48 N Coaldale/Cotopaxi: MP 40 Badger Creek South: MP 43 to MP 48 Stubbs Gulch: MP 104 to MP 107 Sugar Creek: MP 113 to MP 114	GIS Analysis: Cooper Mountain, Eightmile Mountain, Crampton Mountain, Echo Canyon, North Badger Creek, N Coaldale/Cotopaxi, Badger Creek South, Stubbs Gulch, Sugar Creek lands with wilderness characteristics intersect corridor.	There is an opportunity to shift the corridor to avoid or minimize the intersections with lands with wilderness characteristics. (2)
87-277 .020				Badger Creek South citizens' proposed wilderness	Not specified.	Settlement Agreement RFI: re-route to avoid citizens' proposed wilderness. Comment on abstract: the corridor abstracts dismiss all intersections with citizens' proposed wilderness areas. This approach is wholly inappropriate and inadequate; the Agencies must address conflicts with proposed wilderness.	The BLM's current inventory findings will be used in land use planning analyses related to the revision, deletion, or addition to the energy corridors. Consideration of citizen wilderness proposals is beyond the Agencies scope and authority. As such, the corridor's current location best meets the siting principles. (1) At such time that citizens' inventory information is formally submitted, the BLM will compare its official Agency inventory information with the submitted materials, determine if the conclusion reached in previous BLM inventories remains valid, and update findings regarding the lands ability to qualify as wilderness in character.
87-277 .021				BLM-identified potential lands with	Not specified.	Settlement Agreement;	There is an opportunity to consider revision (corridor narrowed or moved)

CORRIDOR 87-277 REVIEW TABLE							
ID	Agency	Agency Jurisdiction	County	Primary Issue	Corridor Location (by Milepost [MP])	Source	Agency Review and Analysis ^{1, 2}
				wilderness characteristics	MP 103 to MP 108 MP 113 to MP 114	<p>RFI: re-route to avoid Wilderness COF-020-017-A, Cooper Mountain, Crampton Mountain subunit, Crampton Mountain, Echo Canyon, Eightmile Mountain, North Badger Creek, Stubbs Gulch, Sugar Creek --BLM-identified Potential lands with wilderness characteristics.</p> <p>Agency Input: BLM indicated that Gunnison FO has done wilderness inventory since the WWEC PEIS.</p> <p>Comment on abstract: Agencies need a consistent approach to address intersections with wilderness-quality lands.</p> <p>835 acres of overlap (Stubbs Gulch-BLM).</p> <p>260 acres of overlap (Sugar Creek-BLM).</p>	<p>between MP 41 to MP 48, MP 103.5 to MP 107.5 (adjacent to Stubbs Gulch), and MP 113 to MP 114 (adjacent to Sugar Creek) to avoid lands with wilderness characteristics. The Gunnison FO completed an inventory of the entire FO for wilderness characteristics in 2013. The corridor does cross three areas that were determined to have lands with wilderness characteristics. The WAPA line that is the center of the corridor is the boundary of the Stubbs Gulch and Sugar Creek areas. The line is within 1,000 to 1,200 ft of the boundary of the South Beaver Creek area and the corridor narrows to 1000 ft, so there is no overlap. There are lands with wilderness characteristics on both sides of the corridor around MP 41 to MP 48. The inventories areas go to both sides of the current authorization (about 250 ft) where the corridor is 3,500 ft. (2)</p>
Visual Resources							
87-277 .022	BLM	Royal Gorge FO	Fremont, CO	VRM Class I	MP 4, MP 22 to MP 26	GIS Analysis: VRM Class I areas are over 1 mi north and south of corridor.	The corridor does not cross VRM Class I areas. (1)
87-277 .023	BLM	Royal Gorge FO, Gunnison FO, and Uncompahgre FO	Fremont, Chaffee, Gunnison, and Montrose, CO	VRM Class II	MP 4, MP 13 to MP 23, MP 48 to MP 65, MP 94, MP 107 to MP 108, MP 120, MP 124 to MP 140 MP 4	<p>GIS Analysis: VRM Class II areas and corridor intersect.</p> <p>Agency Input: corridor passes through VRM Class II area of Phantom Canyon ACEC.</p>	<p>Future development within the corridor could be limited as VRM Class II allows for low level of change to the characteristic landscape. Management activities may be seen, but should not attract the attention of the casual observer. (3)</p> <p>The BLM RMPs do have exclusion or avoidance prescriptions for utility</p>

CORRIDOR 87-277 REVIEW TABLE							
ID	Agency	Agency Jurisdiction	County	Primary Issue	Corridor Location (by Milepost [MP])	Source	Agency Review and Analysis ^{1, 2}
					MP 0 to MP 23, MP 47 to MP 52	Agency Input: corridor crosses through VRM II and III areas of Gold Belt SRMA at MP 0 to MP 23 and Arkansas Headwaters SRMA at MP 47 to MP 52.	corridors that would intersect VRM Class II areas depending on the location (e.g., within a SRMA). The Gunnison RMP does not designate any ROW exclusion or avoidance areas related to VRM.
87-277 .024	BLM	Royal Gorge FO, Gunnison FO, and Uncompahgre FO	Fremont, Gunnison, and Montrose, Co	VRM Class III	MP 87 to MP 98, MP 105 to MP 107, MP 111 to MP 122, and MP 141 MP 93 MP 115	GIS Analysis: VRM Class III areas and corridor intersect. Agency Input: corridor crosses OSNHT. Agency Input: corridor crosses over Silver Thread Scenic Byway within VRM Class III area.	VRM Class III allows for moderate change to the characteristic landscape, although minimizing visual contrast remains a requirement. Management activities may attract the attention of the casual observer, but shall not dominate the view. The existing corridor location best meets the siting principles. (1)
87-277 .025	BLM	Gunnison FO	Gunnison, CO	VRM Class IV	MP 90 to MP 92, MP 95 to MP 115, MP 120 to MP 125, and MP 133	GIS Analysis: VRM Class IV areas and corridor intersect.	The existing corridor location best meets the siting principles. (1)
Cultural Resources							
87-277 .026	BLM and USFS	Royal Gorge FO, Gunnison FO, San Isabel National Forest, and private land	Chaffee and Montrose, CO	National Register of Historic Places (NRHP) properties	MP 55 (near), MP 65 (near), and MP 141 (near)	Settlement Agreement: National Historic Places GIS Analysis: Hutchinson Ranch (boundary increase), Hutchinson Ranch (pending NRHP-listing), and Poncha Springs Schoolhouse as close as 1 mi north of corridor; Maysville School 1,600 ft south of corridor; D&RG Railroad Box Outfit Car No. 04414, D&RG Western Railroad Stock Car No. 5620, D&RG Western Railroad Stock Car No. 5679D, and RGS Railroad Derrick Car less than 1 mi northwest of corridor.	These properties are either listed on or are pending listing on the NRHP, but it is not clear which properties are specified as being of concern in the Settlement Agreement, Exhibit A. None of these properties are located on Federal lands within the Section 368 energy corridor. The potential exists for cultural/heritage resources to be present within the corridor. Analysis of cultural resource impacts would be conducted as part of the ROW application process, but the properties listed here are not being considered for corridor-level planning because they are not in the corridor. (3)

CORRIDOR 87-277 REVIEW TABLE							
ID	Agency	Agency Jurisdiction	County	Primary Issue	Corridor Location (by Milepost [MP])	Source	Agency Review and Analysis ^{1, 2}
87-277 .027			Gunnison, CO	Aberdeen Quarry	Not specified.	Comment on abstract: the corridor passes directly over the historic Aberdeen Quarry (which is a locally designated landmark.	The Aberdeen Quarry is a concern for the Agencies that cannot be resolved during corridor-level planning. Surveys will occur as part of the ROW application process. Existing IOPs specific to cultural resources and tribal consultation would be followed in connection with any proposed energy project in the corridor. (3)
Land Use Concerns							
Corridor pinched by BLM or USFS authorized use							
87-277 .028	BLM	Gunnison FO	Gunnison, CO	Reduced corridor width	MP 108 to MP 111	GIS Analysis: the corridor was locally designated by the Gunnison FO and the width is reduced from 5,280 ft to 1,000 ft where the corridor crosses the South Beaver Creek ACEC.	The corridor width is reduced to 1,000 ft through the South Beaver Creek ACEC. There is one existing transmission line; however, there appears to be room for additional development. See analysis for Skiff Milkvetch. (1)
Military and Civilian Aviation							
87-277 .029	BLM	Royal Gorge FO	Fremont, CO	MTR – VR	MP 41 to MP 50	GIS Analysis: VR and corridor intersect.	The concern related to MTRs is noted and the adherence to existing IOP regarding coordination with DoD would be required to ensure this potential conflict is considered at the appropriate time. In addition, there is an opportunity to consider a revision to the existing IOP to include height restrictions for corridors in the vicinity of DoD training routes. (2)
87-277 .030	BLM	Royal Gorge FO	Fremont, CO	DoD SUA - MOA	MP 0 to MP 27	GIS Analysis: MOA and corridor intersect. Comment on abstract: Development would greatly impact capabilities of Fort Carson military Reservation and Airburst Range (Restricted Area 2601) (inert live-fire, live-drop range).	The concern related to MTRs is noted and the adherence to existing IOP regarding coordination with DoD would be required to ensure this potential conflict is considered at the appropriate time. In addition, there is an opportunity to consider a revision to the existing IOP to include height

CORRIDOR 87-277 REVIEW TABLE

ID	Agency	Agency Jurisdiction	County	Primary Issue	Corridor Location (by Milepost [MP])	Source	Agency Review and Analysis ^{1, 2}
						Potential for obstruction in airspace used for military operations. All Restricted Airspace needs to be avoided due to hazardous operations and transmission lines should remain outside of Airburst Range/Fort Carson.	restrictions for corridors in the vicinity of DoD training routes. (2)
Public Access and Recreation							
87-277 .031	USFS	GMUG and San Isabel National Forests	Chaffee and Gunnison, CO	Monarch Pass Ski Area	MP 73 to MP 75	Agency Input: the present 230-kV line is very close to the south and east boundary of the Monarch Pass Ski Area. The corridor goes through 1B Downhill Skiing and Winter Sports prescription area that is a special use permit area for snowcat skiing from Monarch Ski Area.	The corridor was designated in its current location over Monarch Pass to align with the existing 230-kV transmission line. Half to most of the Monarch Pass Ski Area is in the north half of Corridor 87-277 creating a pinch point but there is little opportunity for corridor revision across the Monarch Pass. (3)
87-277 .032	BLM	Gunnison FO	Gunnison, CO	Silver Thread Scenic Byway	MP 115	GIS Analysis: Silver Thread Scenic Byway intersects corridor. The Silver Thread Scenic Byway includes the entire length of Highway 149. The corridor crosses Hwy 149 near its northern end, and is located in a VRM Class III area. A Corridor Master Plan was completed in the late 1990s. Interpretive panels were recently developed and installed. The theme of the panels tells the story of mankind's progress, the evidence of that progress, and how it affects and is affected by the natural history of the area	The Silver Thread Scenic Byway is administered by the CDOT, and future development in the corridor would require coordination with this agency. (3)
87-277 .033	NA	City	Chaffee, CO	Chipeta Park, Hoover Ranch Park, Poncha Springs Disc Golf	MP 54, MP 57 to MP 58	GIS Analysis: city parks are under 1 mi north of corridor and within a corridor gap.	The corridor's current location does not intersect the parks and best meets the siting principles. (1)

CORRIDOR 87-277 REVIEW TABLE							
ID	Agency	Agency Jurisdiction	County	Primary Issue	Corridor Location (by Milepost [MP])	Source	Agency Review and Analysis ^{1, 2}
				Course, and Hot Springs Pool			
87-277 .034			Gunnison, CO	Waunita Hot Springs	Not specified.	Comment on abstract: corridor is in close proximity to Waunita Hot Springs, a tourist attraction and geothermal energy resource area.	The corridor's current location does not intersect the Waunita Hot Springs and best meets the siting principles. (1)
Other noted land use concerns							
87-277 .035	USFS	GMUG and San Isabel National Forests	Chaffee and Gunnison, CO	Monarch Pass	MP 73 to MP 75	Agency Input: Monarch Pass is a geographic break and the location of the Continental Divide, the boundary between the GMUG and San Isabel National Forests, the boundary between Gunnison and Chaffee County. The corridor, including the existing transmission line, traverses the south side of the Monarch Ski Area.	During the WWEC PEIS development, the USFS agreed to designate the corridor in its current location following the existing transmission line. (3)
87-277 .036	BLM	Royal Gorge FO	Chaffee, CO	Pinch points/narrow areas	MP 38 to MP 50	Agency Input: pinch points and narrow areas are present in the Royal Gorge FO.	There is a pinch point in the corridor as well as one existing transmission line; however, there appears to be room for additional development. (1)
87-277 .037	NPS	Curecanti NRA	Gunnison, CO	Pinch points/deep canyons	MP 120 to MP 121, MP 125 to MP 126	Agency Input: the WAPA line crosses two deep canyons with arms of Blue Mesa Reservoir (Cebolla Creek and Lake Fork of the Gunnison River) located at the bottom.	Pinch point may limit pipeline development within the corridor. (3)
87-277 .038	NPS	Curecanti NRA	Montrose and Gunnison, CO	Curecanti NRA	MP 109 to MP 141 MP 121, MP 125	GIS Analysis: NRA and the corridor are parallel and abut each other in some locations. The corridor crosses the NRA. The Blue Mesa Reservoir is located within the Curecanti NRA.	BLM can only authorize projects on BLM-administered lands. Development in corridor gaps would require coordination outside of the Agencies. The NPS General Management Plan for the Curecanti NRA has no ROW exclusion or avoidance prescriptions regarding

CORRIDOR 87-277 REVIEW TABLE							
ID	Agency	Agency Jurisdiction	County	Primary Issue	Corridor Location (by Milepost [MP])	Source	Agency Review and Analysis ^{1, 2}
						<p>Agency Input: between MP 124 to MP 126 corridor crosses Curecanti NRA where there is existing large lattice towers. Corridor also crosses Curecanti NRA from MP 138 to MP 140.</p> <p>Comment on abstract: abstract should specify the process for assessing conflicts in close consultation with the NPS (and other affected Agencies) and should make explicit available options for resolving conflicts to NPS-managed lands within the NRA and adjacent lands.</p>	utility corridors paralleling or abutting the NRA. Project proponents should reach out to the NRA early in the process to identify potential issues associated with projects near to or spanning the NRA. (3)
87-277 .039	NPS	Curecanti NRA	Montrose and Gunnison, CO	Lands of Conservation Opportunity	MP 119, MP 133 to MP 138	<p>Agency Input: Lands of Conservation Opportunity centered on corridor near MP 119. Corridor abuts Lands of Conservation Opportunity to the north between MP 133 to MP 138. Lands of Conservation Opportunity are private lands identified around the Curecanti NRA recommended for conserving natural, cultural, recreation, and scenic resources. Curecanti NRA has identified some adjacent areas as Lands of Conservation Opportunity. There are several areas currently managed by other Federal Agencies identified as having potential to be exchanged with the NPS.</p>	
87-277 .040	BLM	Gunnison FO	Montrose, CO	Black Canyon of the Gunnison National Park	MP 138 to MP 141	<p>GIS Analysis: the corridor is 4 mi south of the southern boundary of the National Park.</p>	National Parks are an important resource that are considered carefully during corridor planning. Coordination

CORRIDOR 87-277 REVIEW TABLE							
ID	Agency	Agency Jurisdiction	County	Primary Issue	Corridor Location (by Milepost [MP])	Source	Agency Review and Analysis ^{1, 2}
							with the National Park Service should occur early in the process to identify concerns. The corridor's current location does not intersect the National Park, and with existing infrastructure, best meets the siting principles. (1)
87-277 .041	State, private	Colorado Parks and Wildlife, private		Conservation easements	Not specified.	Comment on abstract: corridor crosses private lands encumbered by conservation easements or CPW-owned properties, which are managed for wildlife, wildlife related recreation, and other recreational uses. In many instances, corridor development would be incompatible with the purpose for which those properties were acquired and are managed. Recommend avoiding CPW properties for corridor alignments, otherwise close pre-planning and coordination with CPW staff would be required. In instances where an easement prohibits corridor development and avoidance of the parcel is not possible, and the exercise of Eminent Domain may result, then the lost conservation values due to corridor development must be compensated for and replaced.	BLM can only authorize land uses on public land. Any gaps between public land within a new proposal would have to be coordinated with those landowners/managers. Since the corridor is centered on the existing WAPA ROW/easement, additional uses may be compatible within that footprint, depending on how the conservation easements and the WAPA easements across non-BLM managed lands are written. (3)
87-277 .042	BLM and USFS	Gunnison FO, Royal Gorge FO, and GMUG and San Isabel National Forests	Fremont, Gunnison, Chaffee, and Montrose, CO	Seventeen stream crossings: Eightmile Creek, Fourmile Creek, Wilson Creek, Currant Creek, Cottonwood Creek, North Tallahassee	MP 3, MP 9 to MP 10, MP 19 to MP 26, MP 45 to MP 50, MP 58, MP 61, MP 68, MP 78, MP 94 to MP 95, MP 98, MP 110 to MP 111,	GIS Analysis: streams cross the corridor. Comment on abstract: the western portion of corridor crosses Tomichi Creek and Cochetopa Creek. Avoid	Stream crossings are not a consideration for corridor-level planning. Linear ROWs can either span streams or be buried underneath them. Existing IOPs address ROW construction on stream quality. (1)

CORRIDOR 87-277 REVIEW TABLE							
ID	Agency	Agency Jurisdiction	County	Primary Issue	Corridor Location (by Milepost [MP])	Source	Agency Review and Analysis ^{1, 2}
				Creek, Badger Creek, Arkansas River, Poncha Creek, South Arkansas Creek, Tomichi Creek, Cochetopa Creek, South Beaver Creek, Willow Creek, Cebolla Creek, Big Blue Creek, Cimarron River	MP 114, MP 121, MP 127, MP 133,MP 140 to MP 141	consequences to these water bodies and their tributaries, as well as downstream impacts to the waters in the Curecanti NRA and Black Canyon of the Gunnison River.	

¹ Projects proposed in the corridor would be reviewed during their ROW application review process and would adhere to Federal laws, regulations, and policy.

² (1) = confirm existing corridor best meets siting principles; (2) = identify opportunities to improve corridor placement or IOPs; (3) = acknowledge concern not easily resolved or avoided by corridor-level planning.

Abstract Acronyms and Abbreviations

ACEC = Area of Critical Environmental Concern; BLM = Bureau of Land Management; CDNST = Continental Divide National Scenic Trail; CDOT = Colorado Department of Transportation; CPW = Colorado Parks and Wildlife; D&RG = Denver & Rio Grande; DoD = Department of Defense; ESA = Endangered Species Act; FO = Field Office; GIS = geographic information system; GMUG = Grand Mesa, Uncompahgre, and Gunnison; GUSG = Gunnison Sage-grouse; IOP = interagency operating procedure; MOA = Military Operations Area; MP = milepost; MTR = Military Training Route; NPS = National Park Service; NRA = National Recreation Area; NRHP = National Register of Historic Places; OSNHT = Old Spanish National Historic Trail; PEIS = Programmatic Environmental Impact Statement; RFI = Request for Information; RGS = Rio Grande Southern; ROW = right-of-way; SRMA = Special Recreation Management Area; SUA = Special Use Airspace; USFS = U.S. Forest Service; USFWS = U.S. Fish and Wildlife Service; VR = Visual Route; VRM = Visual Resource Management; WAPA = Western Area Power Administration; WSA = Wilderness Study Area; WWEC = West-wide Energy Corridor.