

Corridor EIS Archives

EM009

From: Kotek, Thomas J.
Sent: Tuesday, July 11, 2006 4:54 PM
To: Corridor EIS Archives
Subject: FW: Preliminary Draft Corridor Map Question about Web Commenting
Importance: High

From: Michael Burke [mailto:Michael_Burke@transcanada.com]
Sent: Wednesday, July 05, 2006 3:13 PM
To: corridoreiswebmaster
Subject: Preliminary Draft Corridor Map Question about Web Commenting
Importance: High

I would like to submit [ESRI ArcMap \(version 9.1\) files and pdf files with proposed corridor information](#). I note that file types are limited in the e-mail standard comment form. What is the best way to get this information to your office for consideration in the PEIS process? Thanks in advance for your help.

Michael B. Burke
Project Development Manager
TransCanada's GTN & NBP Systems
1400 SW Fifth Ave., Suite 900
Portland, OR 97201
(503) 833-4509
(503) 816-2780 cell
(503) 833-4954 fax
michael_burke@transcanada.com

This electronic message and any attached documents are intended only for the named addressee(s). This communication from TransCanada may contain information that is privileged, confidential or otherwise protected from disclosure and it must not be disclosed, copied, forwarded or distributed without authorization. If you have received this message in error, please notify the sender immediately and delete the original message. Thank you.

July 07, 2006

Robert Sullivan
Energy Corridor PEIS Webmaster
Environmental Science Division
Argonne National Laboratory
9700 South Cass Avenue
EVS/900
Argonne, IL 60439
(630) 252-6182

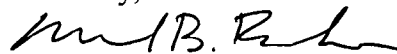
Subject: West-wide Energy Corridor Programmatic Environmental Impact Statement

On November 2, 2005, TransCanada's Gas Transmission Northwest (GTN) and North Baja Pipeline (NBP) submitted comments regarding the West-wide Energy Corridor Programmatic Environmental Impact Statement (PEIS). Recently, maps have been made available that show potential corridors on Federal lands. We would like to provide updated information regarding the maps which reflects new corridor routing information that TransCanada has developed for three natural gas pipeline projects that we are considering in Oregon, Arizona, and California.

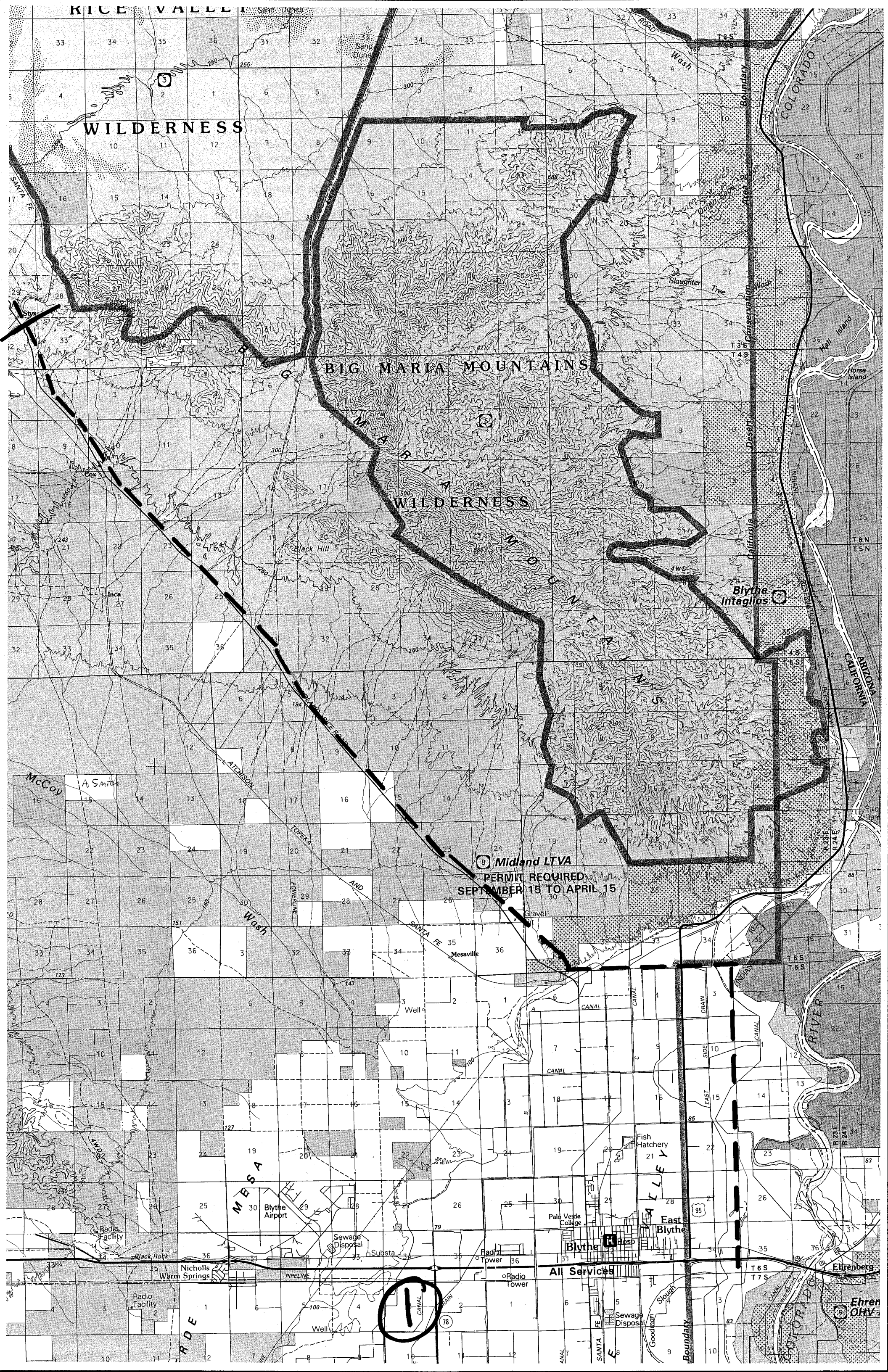
Enclosed is a CD containing files that depict the routes for each of the three projects. These routes show our current plans for these pipeline projects. The Oregon project is shown in the current maps. However, recently changes have been made to the route. The Arizona and California projects, which generally follow existing linear facilities, are not shown in the current maps. We hope that the maps in the PEIS can be modified to reflect the most recent information that we can provide regarding these important project.

Thank you for considering our comments.

Sincerely,



Michael B. Burke
Project Development Manager
TransCanada's GTN & NBP Systems
1400 SW Fifth Ave., Suite 900
Portland, OR 97201
(503) 833-4509
(503) 833-4954 fax
michael_burke@transcanada.com



WILDERNESS

BIG MARIA MOUNTAINS

WILDERNESS

Midland LTVA
PERMIT REQUIRED
SEPTEMBER 15 TO APRIL 15

1

Ehrenberg
OHV

B

C

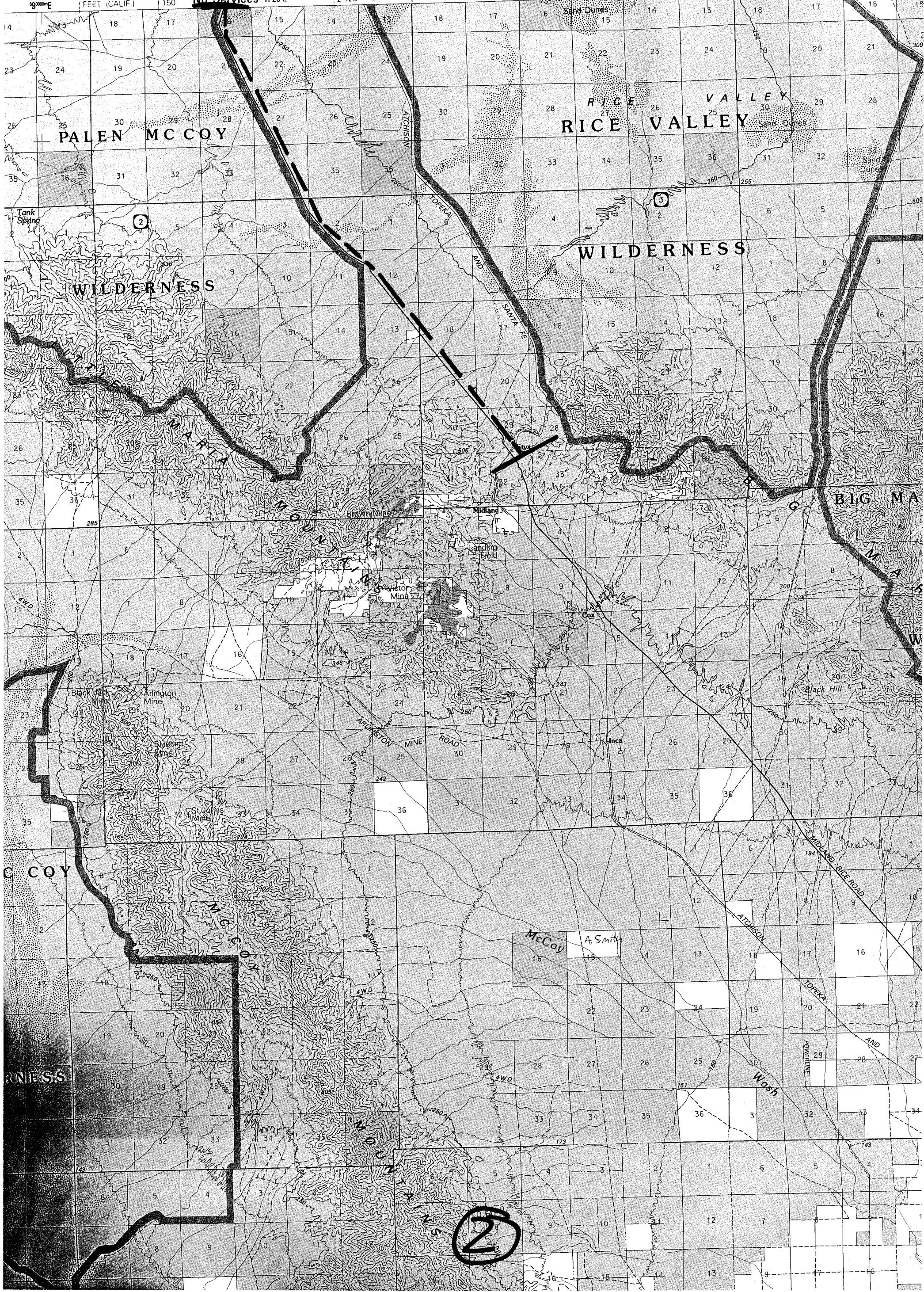
D

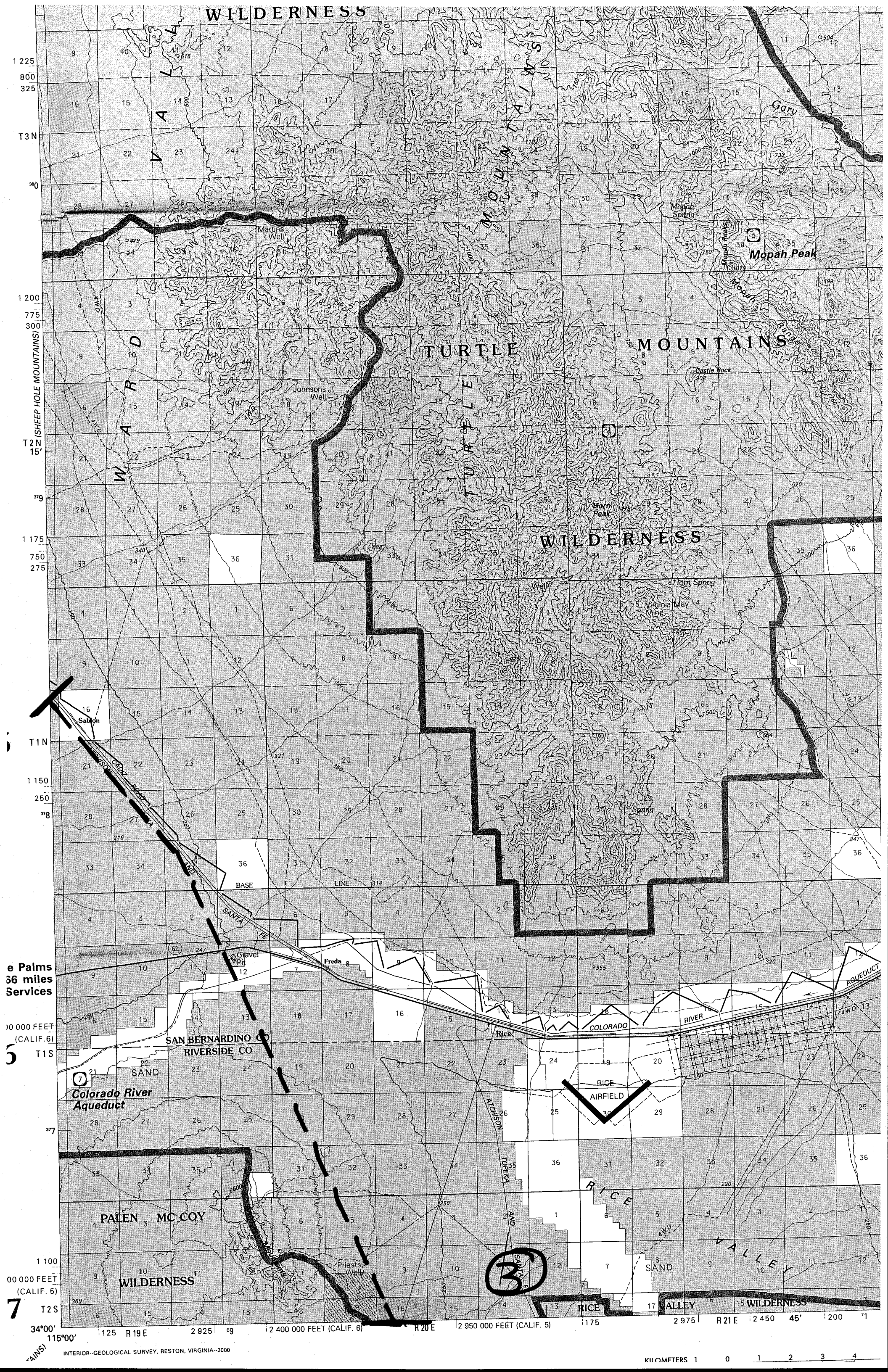
ORIGNA—ARIZONA
2 400 000
FEET (CALIF.)

Rice
6 miles
No Services R 20 E

R 21 E | 2 450 45' | 200 71

| 2 475 R 22 E |





1 225
800
325
T3N
30
1 200
775
300
T2N
15'
39
1 175
750
275
T1N
1 150
250
38
10 000 FEET
(CALIF. 6)
5
T1S
37
1 100
00 000 FEET
(CALIF. 5)
7
T2S

34°00' 115°00' 1 125 R 19 E 2 925 39 2 400 000 FEET (CALIF. 6) R 20 E 2 950 000 FEET (CALIF. 5) 1 175 2 975 R 21 E 2 450 45' 200 71

I

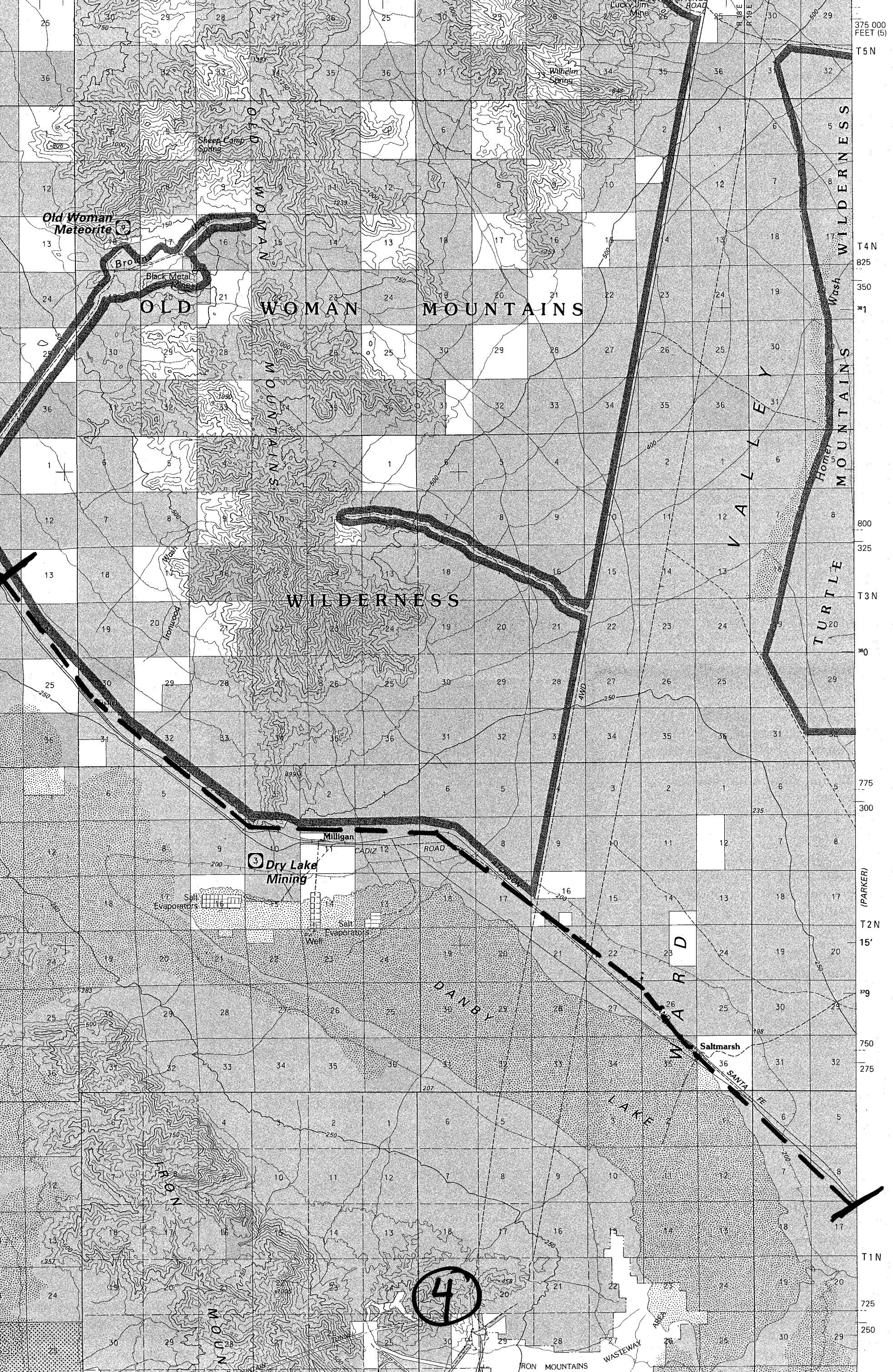
J

K

30X60 MINUTE SERIES (TOPOGRAPHIC)

(NEEDLES)

2 825 15' R17 E 2 850 2 325 7 2 875 2 350 R18 E 2 900 000 FEET (5) 115°00' 34°30'



4

onal Trails Hwy
old U.S. 66)
Chambless
6 miles

G

H



4 (AMBOY)

2 775

2 250

R 15 E

5

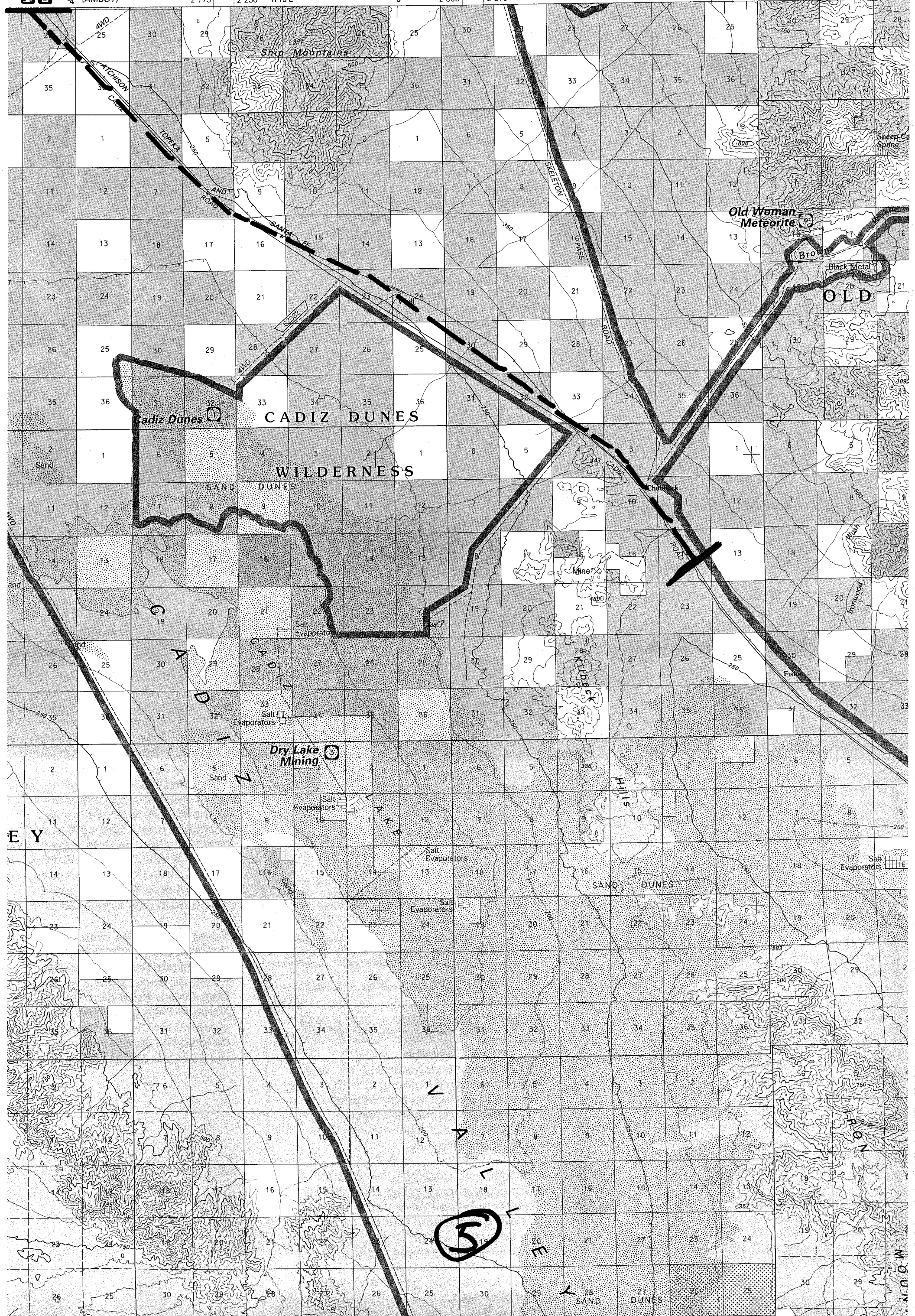
2 800

2 275

R 16 E

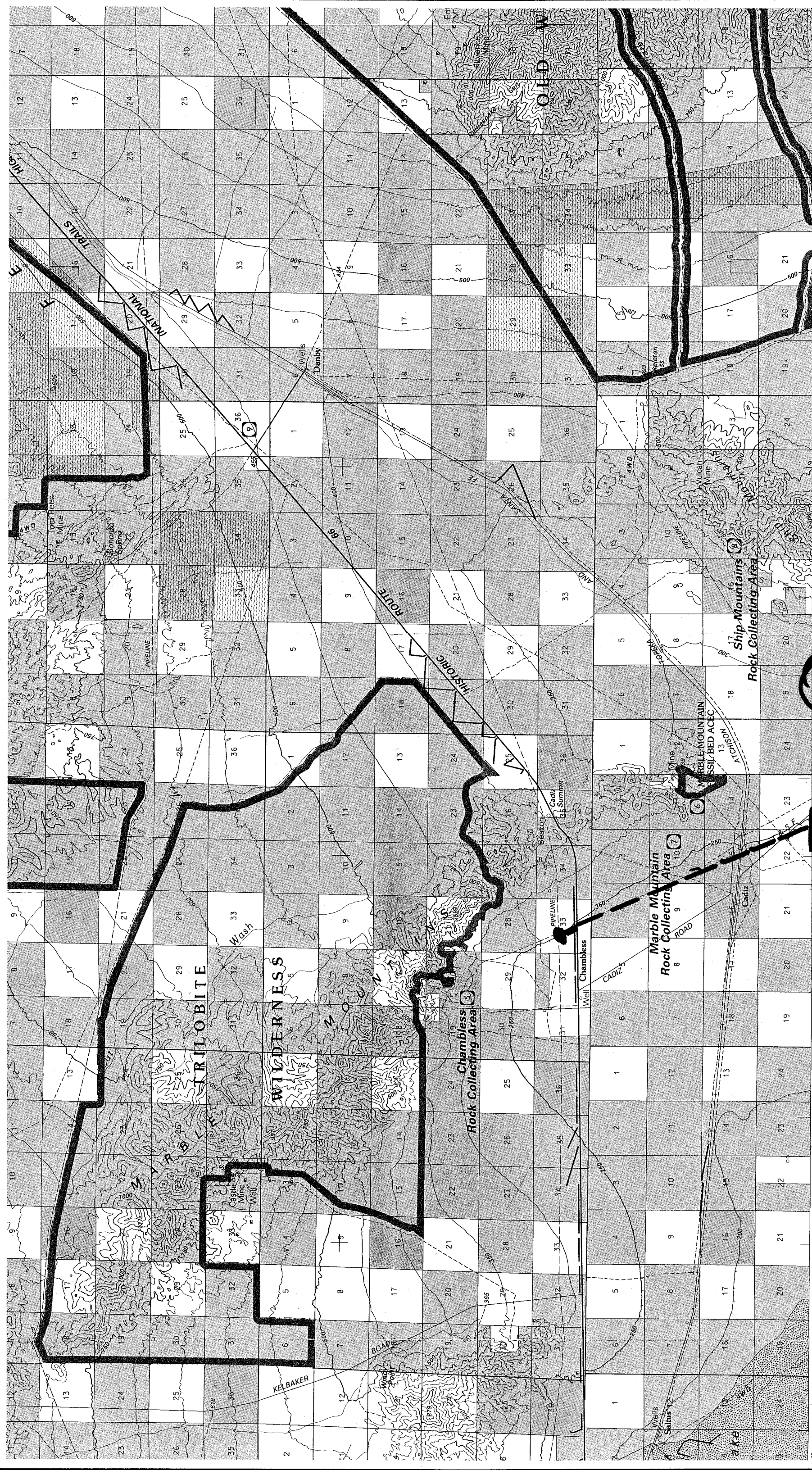
2 825

15'



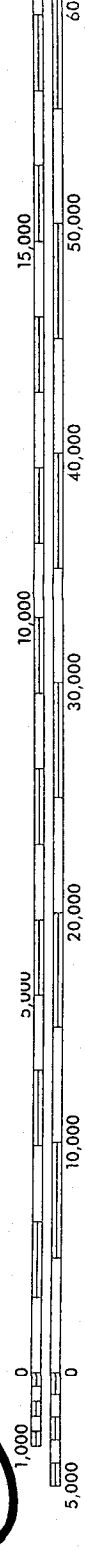
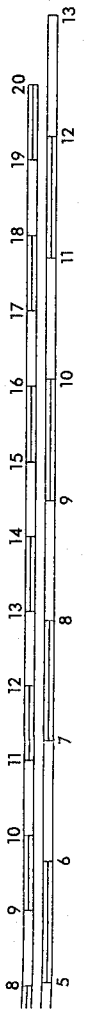
5

MOON



SCALE 1:100,000

1 CENTIMETER ON THE MAP REPRESENTS 1 KILOMETER ON THE GROUND
CONTOUR INTERVAL 50 METERS



BUREAU OF LAND MANAGEMENT

POINTS OF INTEREST

Oregon Lateral

