

Corridor EIS Archives

From: corridoreiswebmaster@anl.gov
Sent: Monday, July 10, 2006 4:12 PM
To: Corridor EIS Archives
Subject: Preliminary Draft Corridor Map Comment M0109

Attachments: San_Diego_Gas_&_Electric's_Preferred_Corridors2_(3)_M0109.pdf



San_Diego_Gas_&
Electric's_Pre...

Thank you for your comment, Thomas Acuna.

The comment tracking number that has been assigned to your comment is M0109. Once the comment response document has been published, please refer to the comment tracking number to locate the response.

Comment Date: July 10, 2006 04:12:12PM CDT

Preliminary Draft Corridor Map Comment: M0109

First Name: Thomas
Middle Initial: G
Last Name: Acuna
Organization: Sempra Utilities
Address: 8315 Century Park Court, CP21E
City: San Diego
State: CA
Zip: 92123-1548
Country: USA
Email: tgacuna@semprautilities.com
Privacy Preference: Don't withhold name or address from public record
Attachment: C:\Documents and Settings\tgacuna\My Documents\San Diego Gas & Electric's Preferred_Corridors2 (3).pdf

Comment Submitted:
July 10, 2006

Office of Electricity Delivery and Energy Reliability Room 8H-033 U.S. Department of Energy
1000 Independence Avenue, S.W.
Washington, DC 20585
Fax: (202) 586-1472

Subject: West-wide Energy Corridor Programmatic Environmental Impact Statement (PEIS)/
Letter 1 with SDG&E Corridors

Dear Ms. Souder,

Sempra Utilities submits this response to the U.S. Departments of Energy, Interior, Agriculture and Defense (collectively, the Agencies) request for comments on the PEIS. Our comments are based on our review of the draft Western Corridor Utility map circulated for public comment on June 12, 2006. In our review of the draft map, we identified several critical existing and future corridors that were not shown on the draft map.

As the parent company of San Diego Gas & Electric (SDG&E) and Southern California Gas Company (SoCalGas), Sempra Utilities has enclosed two maps representing the specific corridors of interest for each utility. Sempra Utilities requests that at a minimum the

corridors shown in green (future) and red (existing) on the enclosed maps be added to the draft map.

To help illustrate the intrastate importance that these corridors provide, we offer a brief overview of each:

SDG&E Corridor Map

- Camp Pendleton Marine Base - Existing electric transmission corridors pass through this Base. These corridors bring intrastate energy to the San Diego region from the Pacific Northwest and Arizona.
- Sunrise Power Link - SDG&E has just completed its evaluation of various routes for a new high-voltage transmission line project from Imperial Valley west to the San Diego. We will provide you with the preferred alignment available in early August 2006 after we submit it to the California Public Utilities Commission (CPUC). Because this is such a critical project, it is our desire that you include this corridor study within the PEIS. We believe the preferred route should be included because it results from substantial environmental study and routing considerations done to minimize impacts.

SoCalGas Corridor Map

- Angeles National Forest - Significant existing gas transmission lines pass through the Forest. These lines bring natural gas from Texas to Central California. They also move natural gas from California producers to interstate pipelines and the Los Angeles area.
- Victorville Area - A number of existing gas transmission lines pass through BLM lands. These lines currently move natural gas from Wyoming, Colorado, Utah, Texas, and New Mexico to serve the Los Angeles basin.
- San Bernardino National Forest - Existing transmission lines pass through the forest to provide intrastate energy to Los Angeles. The natural gas that they carry comes from Wyoming, Colorado, Utah, Texas, and New Mexico.
- Los Padres National Forest - Important gas transmission lines pass through the forest at the east and northerly sections. The lines move natural gas from California producers to interstate pipelines and lines that serve the Los Angeles basin.
- Miramar Marine Corps Base - Three existing and one proposed gas transmission lines traverse Miramar. These lines bring intrastate gas to San Diego from Wyoming, Colorado, Utah, Texas, and New Mexico. They also bring gas from Northern California producers.
- Colorado Desert - Existing and proposed gas transmission lines pass through the Chocolate Mountain Bombing Range and BLM lands. These lines transport or will carry future intrastate gas to Imperial Valley and Los Angeles from Wyoming, Colorado, Utah, Texas, and New Mexico.
- Otay Mountain Area - A future gas transmission line will be needed to pass through BLM lands to ensure delivery of international gas. This line would be able to serve the future needs for the San Diego area.
- Camp Pendleton - An existing gas transmission pipeline passes through the coastal edge of Camp Pendleton. This line currently moves natural gas to San Diego from Wyoming, Colorado, Utah, Texas and New Mexico.

It is important to note that over time, the above corridors may allow for the transport of LNG (liquid natural gas) from California to other States. Projects are now being evaluated to establish LNG delivery points on the West coast of California and Mexico. Transportation to other states could begin as early as 2008 or 2009.

Each of the above mentioned corridors has the potential to meet the need criteria listed on the Department of Energy's (DOE) website (<http://corridoreis.anl.gov/eis/pdmap/index.cfm>) and used by the DOE to do the "first cut" preliminary screening of corridors to be included in the PEIS. That is:

- The corridors have the potential to enhance west-wide delivery of natural gas and electric energy.
- The proposed electric corridors have the potential to improve the electric

transmission grid by contributing to improved system reliability and capacity, and incrementally reducing electric transmission system congestion.

- The corridors have the potential to transport energy from supply areas to demand areas and, in the case of the Sunrise Powerlink, have the added benefit of being capable of tapping into potential sources of renewable solar, wind and geothermal energy resources in the southeastern portions of Southern California.

As the Agencies know, it is imperative to recognize existing corridors and designate future transmission corridors. It is becoming more and more difficult to site gas and electric transmission projects, particularly in Southern California where there are a myriad of natural resources, parks, forests, wilderness, tribal lands, development and other land use considerations.

Sempra Utilities has been working closely with the Western Utility Group (WUG) and the California Energy Commission (CEC) to jointly provide comments on the corridor study to DOE. While we will continue to work with the WUG and the CEC, it became apparent for coordination reasons that we needed to share our specific desires directly to DOE.

In closing, Sempra Utilities appreciates and supports the efforts of the Agencies to address and manage the long term energy needs of our Country. If there is any additional information we might provide, please let me know. We will respond promptly.

Sincerely,

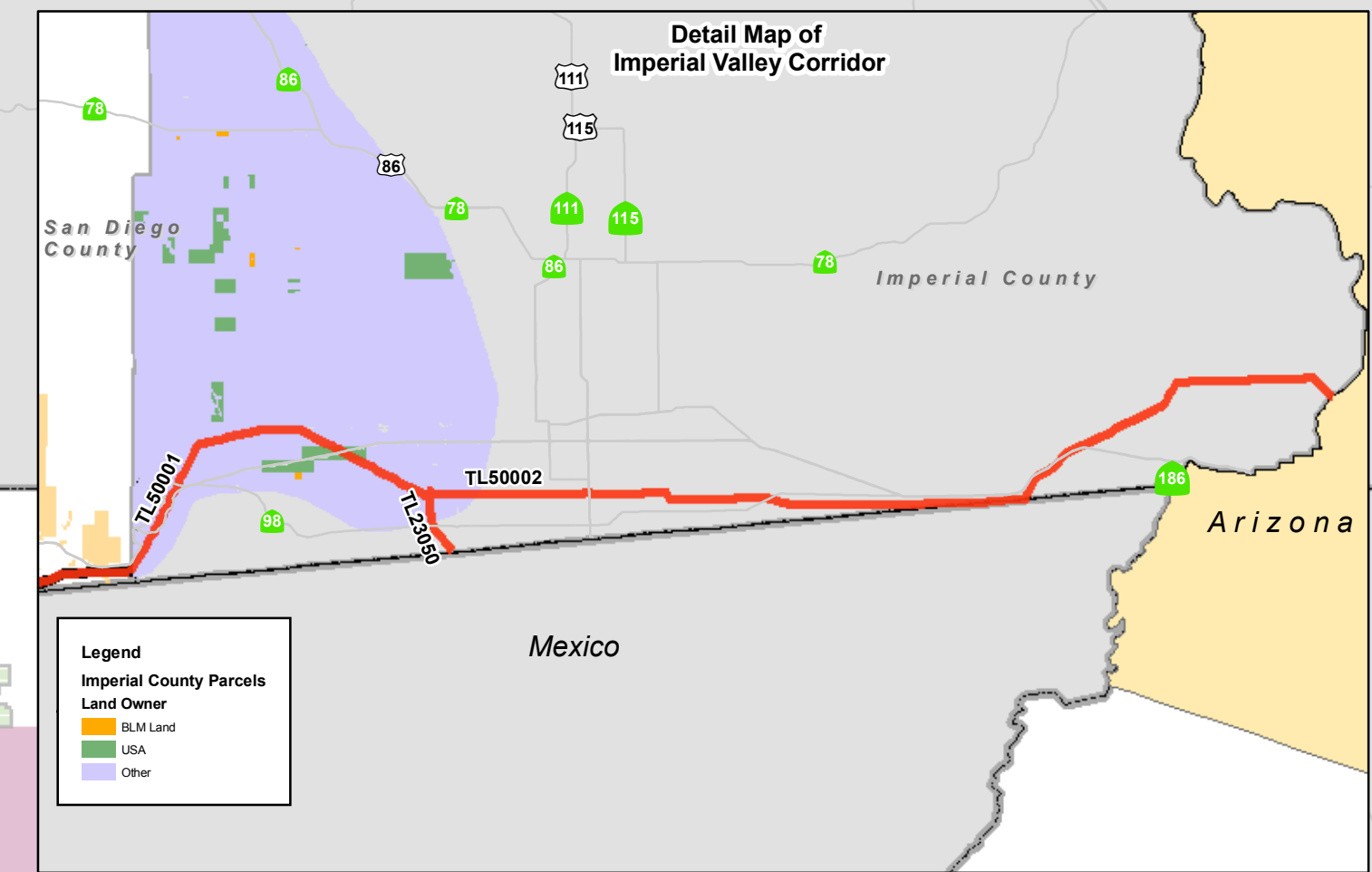
Thomas G. Acuna
Land Planning Supervisor
Sempra Utilities
(858) 637-3701
(619) 884-0566
8315 Century Park Court
CP21E
San Diego, CA 92123-1548

Cc:

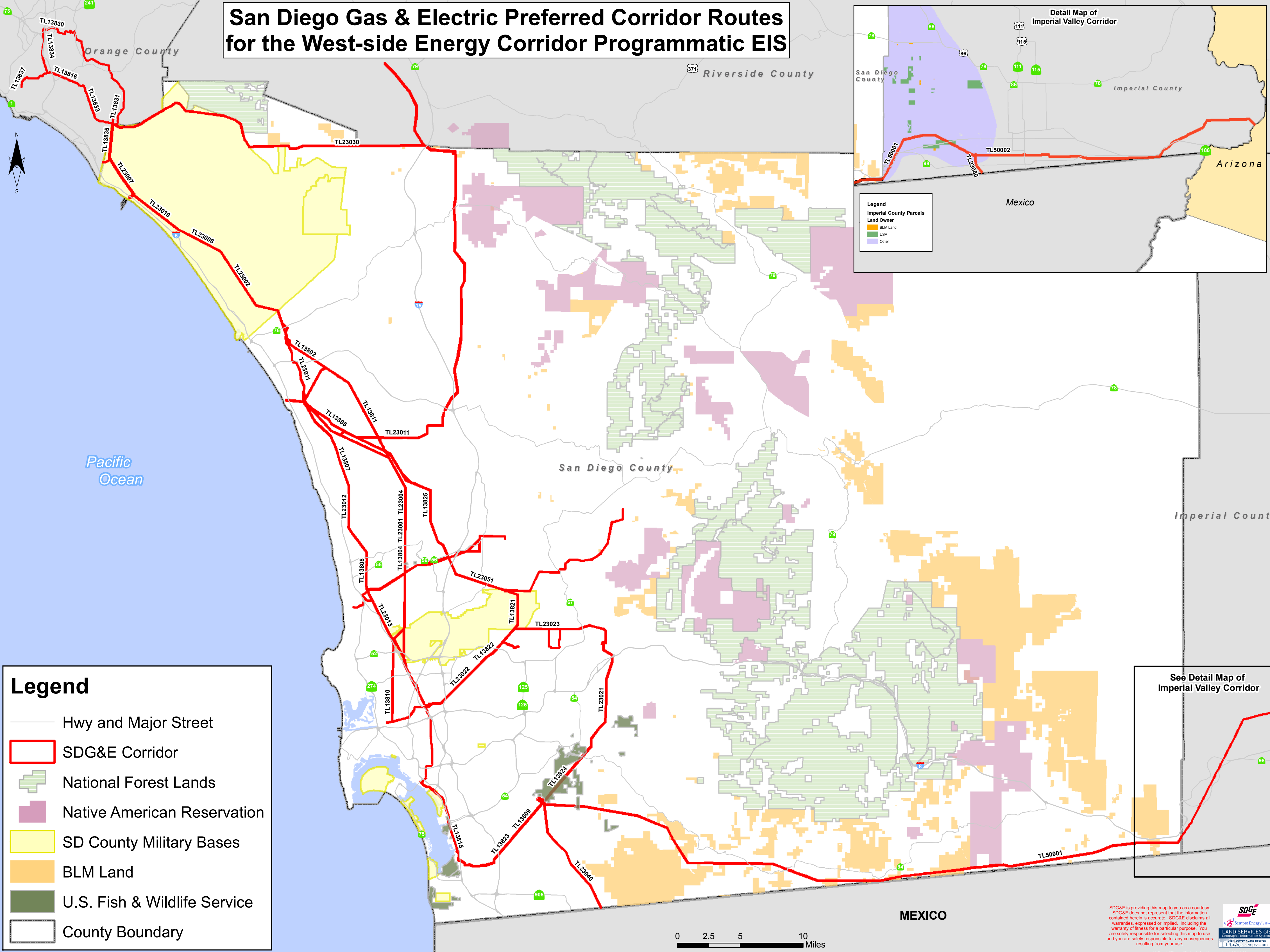
Jim Bartridge
California Energy Commission, MS-46
1516 Ninth Street
Sacramento, CA 95814-5504
916-654-4169
jbartrid@energy.state.ca.us

Questions about submitting comments over the Web? Contact us at:
corridoreiswebmaster@anl.gov or call the Preliminary Draft Corridor Map Webmaster at
(630)252-6182.

San Diego Gas & Electric Preferred Corridor Routes for the West-side Energy Corridor Programmatic EIS



Legend
 Imperial County Parcels
 Land Owner
 BLM Land
 USA
 Other



Legend

- Hwy and Major Street
- ▭ SDG&E Corridor
- ▭ National Forest Lands
- ▭ Native American Reservation
- ▭ SD County Military Bases
- ▭ BLM Land
- ▭ U.S. Fish & Wildlife Service
- ▭ County Boundary

See Detail Map of Imperial Valley Corridor



SDG&E is providing this map to you as a courtesy. SDG&E does not represent that the information contained herein is accurate. SDG&E disclaims all warranties, expressed or implied, including the warranty of fitness for a particular purpose. You are solely responsible for selecting this map to use and you are solely responsible for any consequences resulting from your use.

SDG&E
 Sempra Energy
 LAND SERVICES GIS
 Geographic Information Systems
 SDG&E Survey Line Records
<http://gis.sempra.com>

Corridor EIS Archives

From: corridoreiswebmaster@anl.gov
Sent: Monday, July 10, 2006 4:20 PM
To: Corridor EIS Archives
Subject: Preliminary Draft Corridor Map Comment M0110

Attachments: Southern_California_Gas_Preferred_Corridors_v2_(2)_M0110.pdf



Southern_California
_Gas_Prefer...

Thank you for your comment, Thomas Acuna.

The comment tracking number that has been assigned to your comment is M0110. Once the comment response document has been published, please refer to the comment tracking number to locate the response.

Comment Date: July 10, 2006 04:19:17PM CDT

Preliminary Draft Corridor Map Comment: M0110

First Name: Thomas
Middle Initial: g
Last Name: Acuna
Address: 8315 Century Park Court, CP21E
City: San Diego
State: CA
Zip: 92123-1548
Country: USA
Email: tgacuna@semprautilities.com
Privacy Preference: Don't withhold name or address from public record
Attachment: C:\Documents and Settings\tgacuna\My Documents\Southern California Gas Preferred Corridors_v2 (2).pdf

Comment Submitted:
July 10, 2006

Office of Electricity Delivery and Energy Reliability Room 8H-033 U.S. Department of Energy 1000 Independence Avenue, S.W.
Washington, DC 20585
Fax: (202) 586-1472

Subject: West-wide Energy Corridor Programmatic Environmental Impact Statement (PEIS)/ Letter 2 with Southern California Gas Company Corridors

Dear Ms. Souder,

Sempra Utilities submits this response to the U.S. Departments of Energy, Interior, Agriculture and Defense (collectively, the Agencies) request for comments on the PEIS. Our comments are based on our review of the draft Western Corridor Utility map circulated for public comment on June 12, 2006. In our review of the draft map, we identified several critical existing and future corridors that were not shown on the draft map.

As the parent company of San Diego Gas & Electric (SDG&E) and Southern California Gas Company (SoCalGas), Sempra Utilities has enclosed two maps representing the specific corridors of interest for each utility. Sempra Utilities requests that at a minimum the corridors shown in green (future) and red (existing) on the enclosed maps be added to the

draft map.

To help illustrate the intrastate importance that these corridors provide, we offer a brief overview of each:

SDG&E Corridor Map

- Camp Pendleton Marine Base - Existing electric transmission corridors pass through this Base. These corridors bring intrastate energy to the San Diego region from the Pacific Northwest and Arizona.
- Sunrise Power Link - SDG&E has just completed its evaluation of various routes for a new high-voltage transmission line project from Imperial Valley west to the San Diego. We will provide you with the preferred alignment available in early August 2006 after we submit it to the California Public Utilities Commission (CPUC). Because this is such a critical project, it is our desire that you include this corridor study within the PEIS. We believe the preferred route should be included because it results from substantial environmental study and routing considerations done to minimize impacts.

SoCalGas Corridor Map

- Angeles National Forest - Significant existing gas transmission lines pass through the Forest. These lines bring natural gas from Texas to Central California. They also move natural gas from California producers to interstate pipelines and the Los Angeles area.
- Victorville Area - A number of existing gas transmission lines pass through BLM lands. These lines currently move natural gas from Wyoming, Colorado, Utah, Texas, and New Mexico to serve the Los Angeles basin.
- San Bernardino National Forest - Existing transmission lines pass through the forest to provide intrastate energy to Los Angeles. The natural gas that they carry comes from Wyoming, Colorado, Utah, Texas, and New Mexico.
- Los Padres National Forest - Important gas transmission lines pass through the forest at the east and northerly sections. The lines move natural gas from California producers to interstate pipelines and lines that serve the Los Angeles basin.
- Miramar Marine Corps Base - Three existing and one proposed gas transmission lines traverse Miramar. These lines bring intrastate gas to San Diego from Wyoming, Colorado, Utah, Texas, and New Mexico. They also bring gas from Northern California producers.
- Colorado Desert - Existing and proposed gas transmission lines pass through the Chocolate Mountain Bombing Range and BLM lands. These lines transport or will carry future intrastate gas to Imperial Valley and Los Angeles from Wyoming, Colorado, Utah, Texas, and New Mexico.
- Otay Mountain Area - A future gas transmission line will be needed to pass through BLM lands to ensure delivery of international gas. This line would be able to serve the future needs for the San Diego area.
- Camp Pendleton - An existing gas transmission pipeline passes through the coastal edge of Camp Pendleton. This line currently moves natural gas to San Diego from Wyoming, Colorado, Utah, Texas and New Mexico.

It is important to note that over time, the above corridors may allow for the transport of LNG (liquid natural gas) from California to other States. Projects are now being evaluated to establish LNG delivery points on the West coast of California and Mexico. Transportation to other states could begin as early as 2008 or 2009.

Each of the above mentioned corridors has the potential to meet the need criteria listed on the Department of Energy's (DOE) website (<http://corridoreis.anl.gov/eis/pdmap/index.cfm>) and used by the DOE to do the "first cut" preliminary screening of corridors to be included in the PEIS. That is:

- The corridors have the potential to enhance west-wide delivery of natural gas and electric energy.
- The proposed electric corridors have the potential to improve the electric transmission grid by contributing to improved system reliability and capacity, and

incrementally reducing electric transmission system congestion.

- The corridors have the potential to transport energy from supply areas to demand areas and, in the case of the Sunrise Powerlink, have the added benefit of being capable of tapping into potential sources of renewable solar, wind and geothermal energy resources in the southeastern portions of Southern California.

As the Agencies know, it is imperative to recognize existing corridors and designate future transmission corridors. It is becoming more and more difficult to site gas and electric transmission projects, particularly in Southern California where there are a myriad of natural resources, parks, forests, wilderness, tribal lands, development and other land use considerations.

Sempra Utilities has been working closely with the Western Utility Group (WUG) and the California Energy Commission (CEC) to jointly provide comments on the corridor study to DOE. While we will continue to work with the WUG and the CEC, it became apparent for coordination reasons that we needed to share our specific desires directly to DOE.

In closing, Sempra Utilities appreciates and supports the efforts of the Agencies to address and manage the long term energy needs of our Country. If there is any additional information we might provide, please let me know. We will respond promptly.

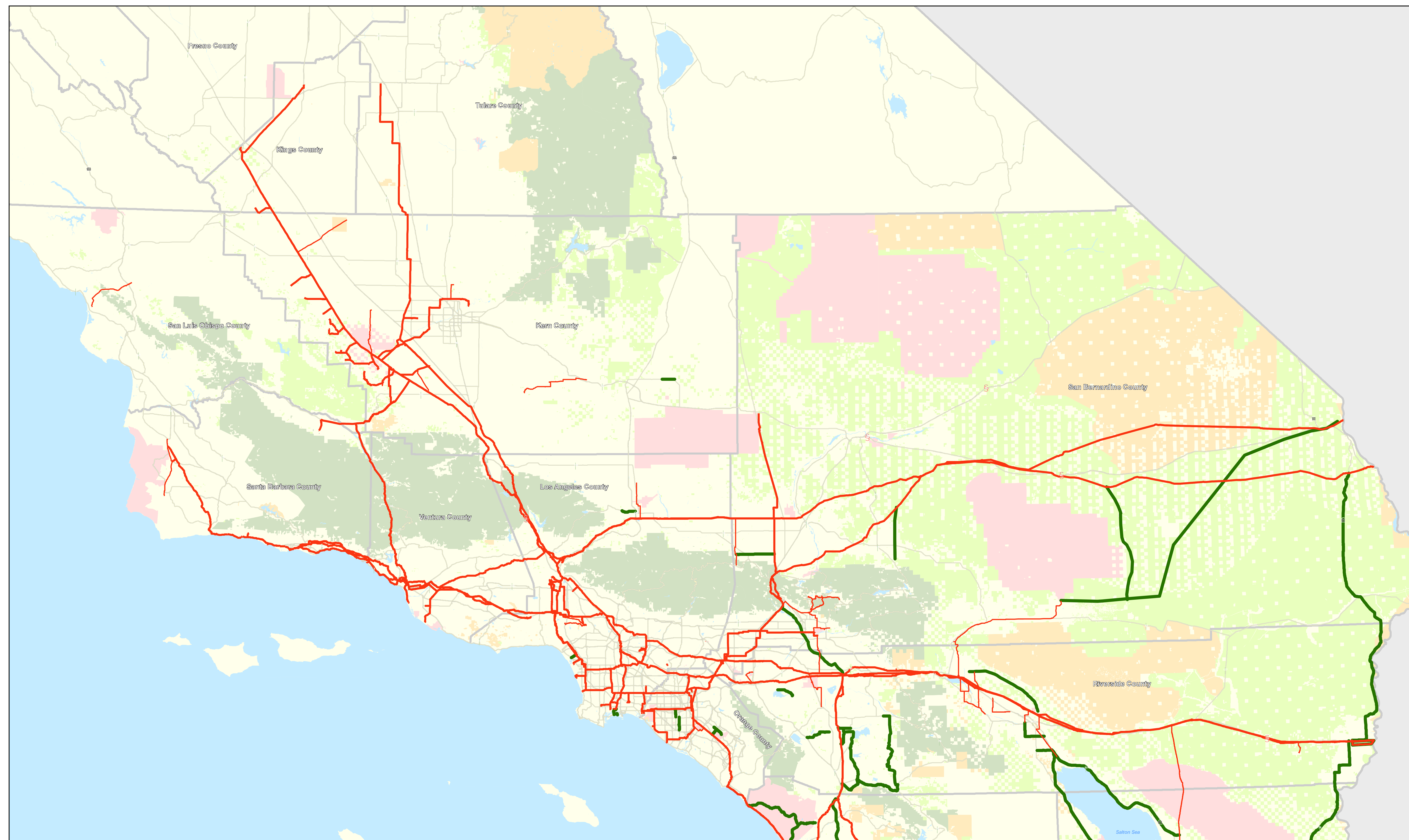
Sincerely,

Thomas G. Acuna
Land Planning Supervisor
Sempra Utilities
(858) 637-3701
(619) 884-0566
8315 Century Park Court
CP21E
San Diego, CA 92123-1548

Cc:

Jim Bartridge
California Energy Commission, MS-46
1516 Ninth Street
Sacramento, CA 95814-5504
916-654-4169
jbartrid@energy.state.ca.us

Questions about submitting comments over the Web? Contact us at:
corridoreiswebmaster@anl.gov or call the Preliminary Draft Corridor Map Webmaster at
(630)252-6182.



Southern California Gas Company's Preferred Corridors
for the West-site Energy Corridor Programmatic EIS



<ul style="list-style-type: none"> County Boundary Existing Pipeline Corridors Proposed Pipeline Corridors Highway 	<p>LANDOWNER</p> <ul style="list-style-type: none"> BLM Interior DOD USFS USCG Private Land Water
--	--

0 4 8 16 24 Miles

Geographic Services - GIS
Southern California Gas Co.
C:\GIS\Energy\10 July 2008

Y:\Maps_Folder\FCM\WestSite
_EnergyCorridorEnergyCorridor_V2.mxd

Disclaimer: Southern California Gas Company (SoCalGas) is providing this map as a courtesy and does not represent that the information contained herein is accurate. SoCalGas disclaims all warranties, expressed or implied, including the warranty of fitness for a particular purpose. The user is solely responsible for selecting this map and accepting any consequences resulting from the use thereof.