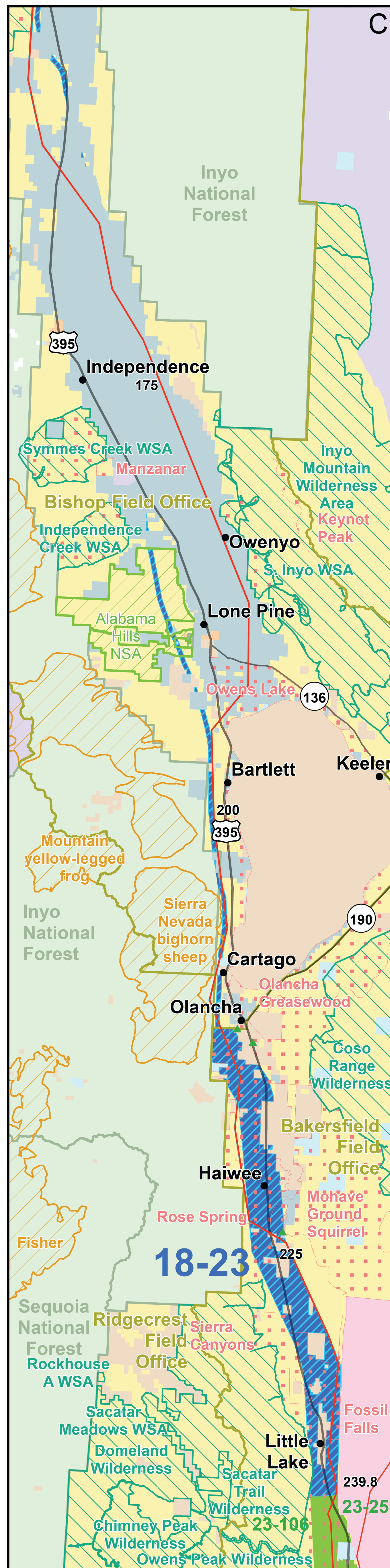
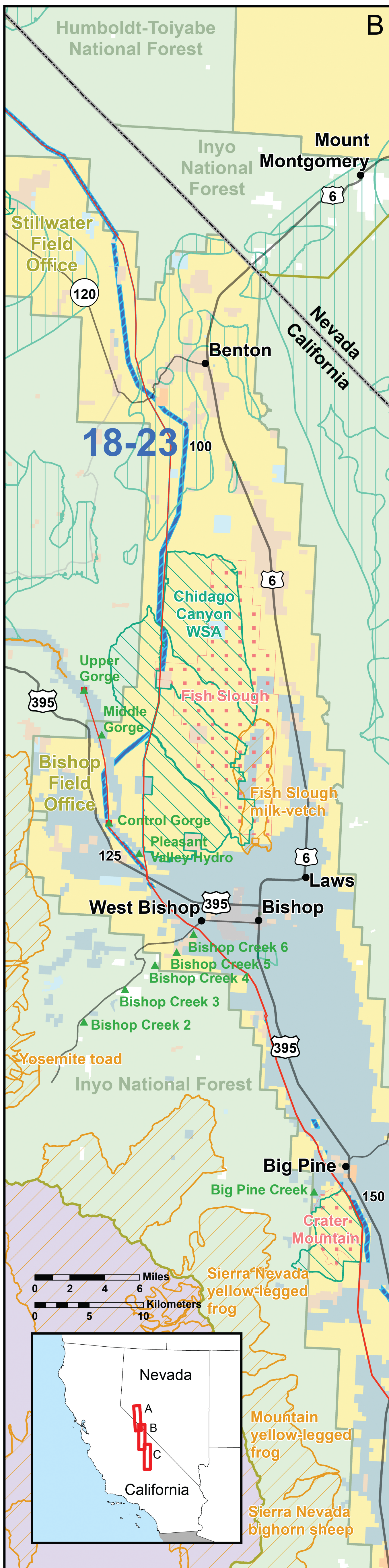
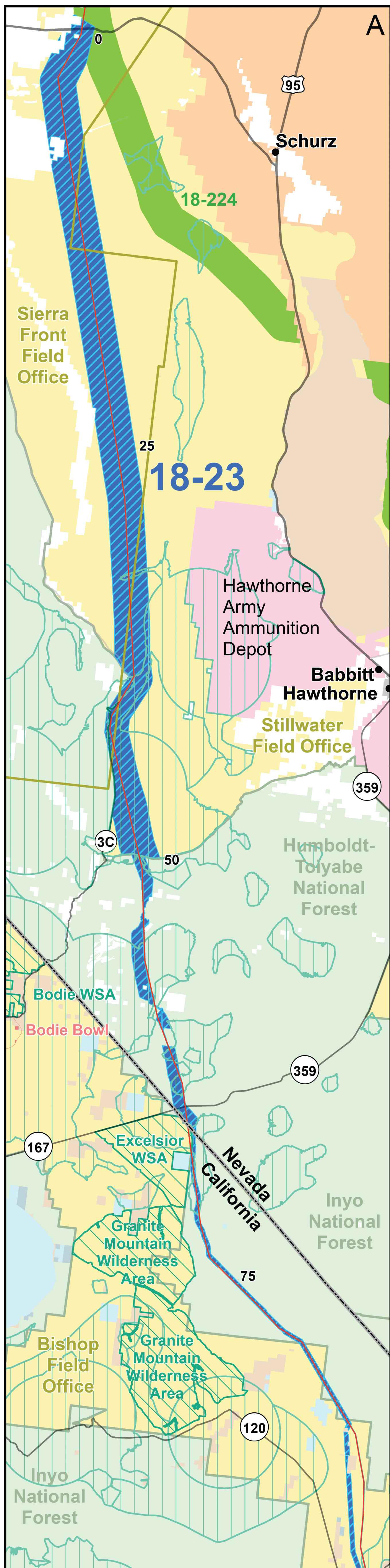


Corridor 18-23 Yerrington to Ridgecrest



Argonne
NATIONAL LABORATORY



Section 368 Energy Corridor

- Designated Corridor 18-23
- Regional Review Recommendation
- Other Designated Section 368 Energy Corridor
- Renewable Energy Power Plant
- Substation

Transmission Line

- Interstate
- U.S. Route
- State Route
- Other

National Conservation Lands

- USFWS Critical Habitat

ACEC

- Greater Sage Grouse Bi-State Distinct Population Segment
- Alabama Hills National Scenic Area

Surface Management Agency

- Bureau of Land Management

Department of Defense

- Non-Federal Local Land
- Other
- State
- Tribal Lands
- U.S. Forest Service
- Urban Area