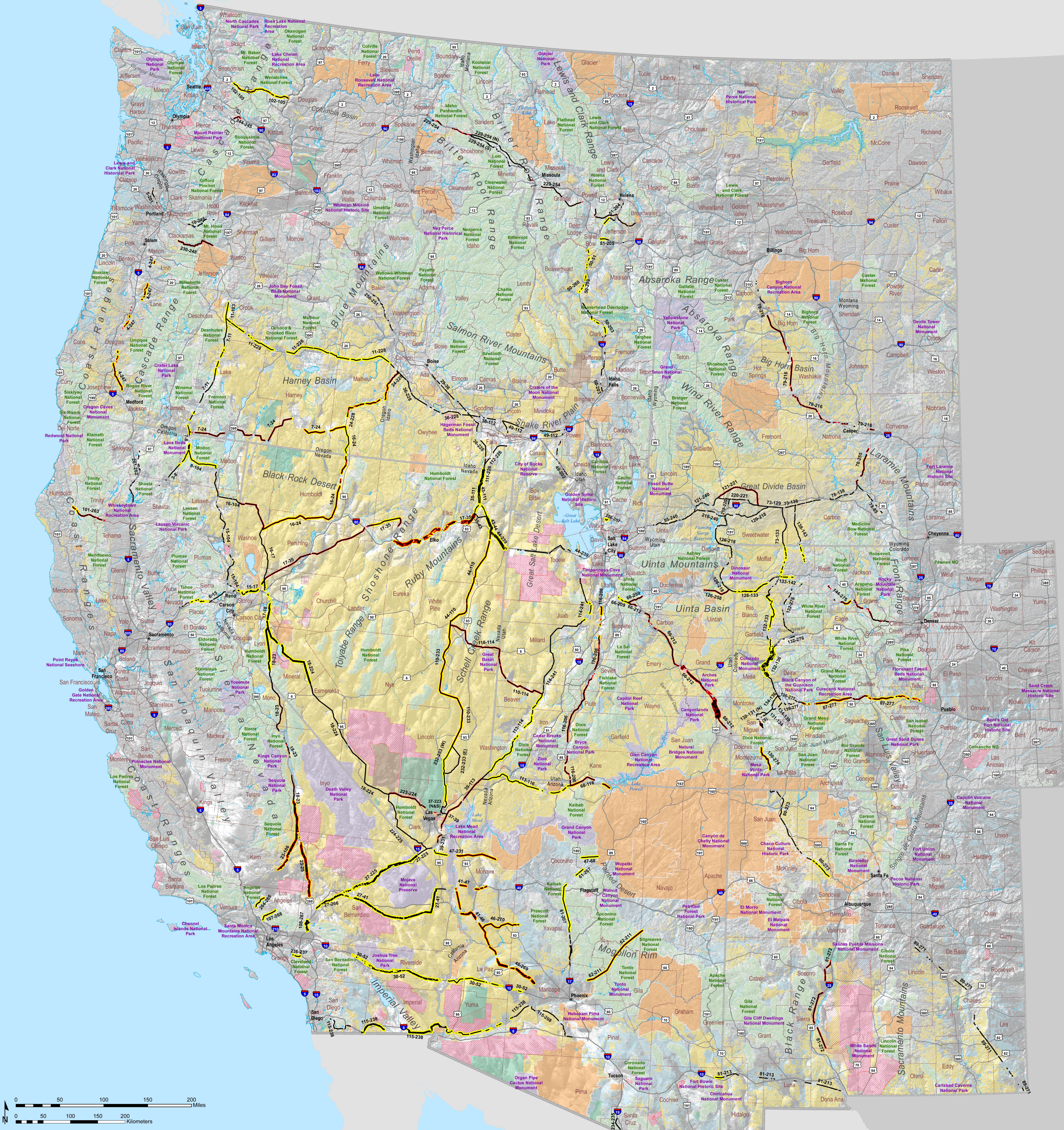


# Designated Section 368 Energy Corridors

## January 2009



**Section 368 Corridor**

- Designated Section 368 Corridor<sup>1</sup>
- Also Locally Designated<sup>2</sup>
- Corridor of Concern<sup>3</sup>

<sup>1</sup> Corridors with a width of less than approximately 1 mile are not depicted to scale. Locally designated corridors and corridors of concern are symbolized with an outline, and widths are not to scale.

<sup>2</sup> Locally designated corridors were designated in either BLM or FS land management plans prior to also being designated as Section 368 corridors.

<sup>3</sup> Corridors of concern were identified by the plaintiffs in a lawsuit following designation of the Section 368 corridors, and the nature of the concern is briefly stated in a settlement reached by the participants. See <http://corridors.anl.gov/news/index.cfm#settlement> for more information.

County Seat	State Owned	<b>Federal Ownership</b>	Fish and Wildlife Service
State Capital / County Seat	Tribal Lands	Bureau of Land Management	National Park Service
County Boundary	DOD Installations and Ranges*	Bureau of Reclamation	Other
State Boundary	<small>*May fall on non-DOD land ownership.</small>	Department of Defense	US Forest Service
International Boundary		Department of Energy	